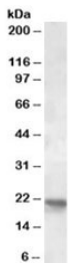


POLR2G Antibody (R33767)

Catalog No.	Formulation	Size
R33767-100UG	0.5 mg/ml in 1X TBS, pH7.3, with 0.5% BSA (US sourced) and 0.02% sodium azide	100 ug

[Bulk quote request](#)

Availability	1-3 business days
Species Reactivity	Human
Predicted Reactivity	Mouse, Rat, Sheep
Format	Antigen affinity purified
Host	Goat
Clonality	Polyclonal (goat origin)
Isotype	Goat Ig
Purity	Antigen affinity
Gene ID	5436
Applications	Western Blot : 1-3ug/ml ELISA (peptide) LOD : 1:1000
Limitations	This POLR2G antibody is available for research use only.



Western blot testing of human cerebellum lysate with POLR2G antibody at 2ug/ml.
Predicted molecular weight: ~19kDa.

Description

Additional name(s) for this target protein: Polymerase (RNA) II (DNA directed) polypeptide G

Application Notes

Optimal dilution of the POLR2G antibody should be determined by the researcher.

Immunogen

Amino acids EFDPSNPPCYK were used as the immunogen for this POLR2G antibody.

Storage

Aliquot and store the POLR2G antibody at -20oC.