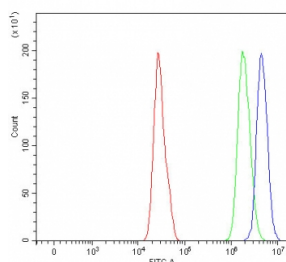


## POLR1C Antibody (RQ8085)

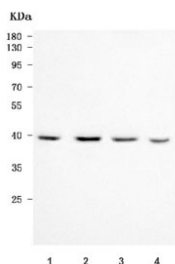
| Catalog No. | Formulation   | Size   |
|-------------|---|--------|
| RQ8085      | 0.5mg/ml if reconstituted with 0.2ml sterile DI water | 100 ug |

**Bulk quote request**

|                           |  |
|---------------------------|--|
| <b>Availability</b>       | 1-3 business days  |
| <b>Species Reactivity</b> | Human  |
| <b>Format</b>             | Antigen affinity purified  |
| <b>Clonality</b>          | Polyclonal (rabbit origin)   |
| <b>Isotype</b>            | Rabbit IgG   |
| <b>Purity</b>             | Antigen affinity purified  |
| <b>Buffer</b>             | Lyophilized from 1X PBS with 2% Trehalose  |
| <b>UniProt</b>            | O15160   |
| <b>Applications</b>       | Western Blot : 0.5-1ug/ml<br>Flow Cytometry : 1-3ug/million cells<br>Direct ELISA : 0.1-0.5ug/ml |
| <b>Limitations</b>        | This POLR1C antibody is available for research use only.   |



Flow cytometry testing of fixed and permeabilized human RT4 cells with POLR1C antibody at 1ug/million cells (blocked with goat sera); Red=cells alone, Green=isotype control, Blue= POLR1C antibody.



Western blot testing of human 1) 293T, 2) K562, 3) HepG2 and 4) RT4 cell lysate with POLR1C antibody. Predicted molecular weight ~39 kDa.

## Description

DNA-directed RNA polymerases I and III subunit RPAC1 is a protein that in humans is encoded by the POLR1C gene. The protein encoded by this gene is a subunit of both RNA polymerase I and RNA polymerase III complexes. The encoded protein is part of the Pol core element. Mutations in this gene have been associated with Treacher Collins syndrome (TCS) and hypomyelinating leukodystrophy 11. Alternative splicing results in multiple transcript variants.

## Application Notes

Optimal dilution of the POLR1C antibody should be determined by the researcher.

## Immunogen

E. coli-derived recombinant human protein (amino acids K47-D346) was used as the immunogen for the POLR1C antibody.

## Storage

After reconstitution, the POLR1C antibody can be stored for up to one month at 4°C. For long-term, aliquot and store at -20°C. Avoid repeated freezing and thawing.