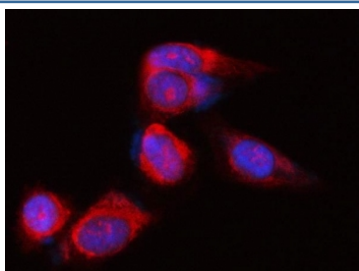


POLR1B Antibody / DNA-directed RNA polymerase I subunit RPA2 (RQ8040)

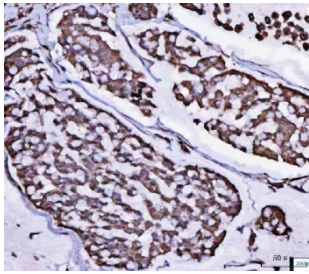
Catalog No.	Formulation	Size
RQ8040	0.5mg/ml if reconstituted with 0.2ml sterile DI water	100 ug

[Bulk quote request](#)

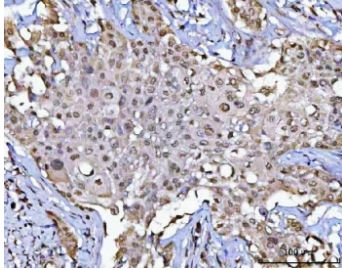
Availability	1-3 business days
Species Reactivity	Human
Format	Antigen affinity purified
Clonality	Polyclonal (rabbit origin)
Isotype	Rabbit IgG
Purity	Antigen affinity purified
Buffer	Lyophilized from 1X PBS with 2% Trehalose
UniProt	Q9H9Y6
Localization	Nuclear, cytoplasmic
Applications	Western Blot : 0.5-1ug/ml Immunohistochemistry (FFPE) : 2-5ug/ml Flow Cytometry : 1-3ug/million cells Immunofluorescence : 5ug/ml Direct ELISA : 0.1-0.5ug/ml
Limitations	This POLR1B antibody is available for research use only.



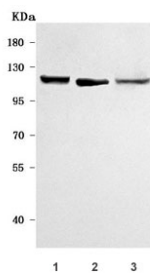
Immunofluorescent staining of FFPE human PC-3 cells with POLR1B antibody (red) and DAPI nuclear stain (blue). HIER: steam section in pH6 citrate buffer for 20 min.



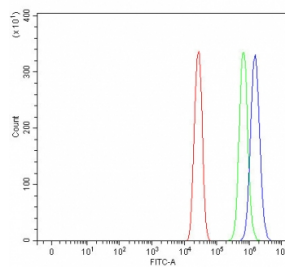
IHC staining of FFPE human breast cancer tissue with POLR1B antibody. HIER: boil tissue sections in pH8 EDTA for 20 min and allow to cool before testing.



IHC staining of FFPE human lymphoma tissue with POLR1B antibody. HIER: boil tissue sections in pH8 EDTA for 20 min and allow to cool before testing.



Western blot testing of human 1) K562, 2) HepG2 and 3) 293T cell lysate with POLR1B antibody. Predicted molecular weight ~128 kDa.



Flow cytometry testing of fixed and permeabilized human A431 cells with POLR1B antibody at 1ug/million cells (blocked with goat sera); Red=cells alone, Green=isotype control, Blue= POLR1B antibody.

Description

DNA-directed RNA polymerase I subunit RPA2 is an enzyme that in humans is encoded by the POLR1B gene. Eukaryotic RNA polymerase I (pol I) is responsible for the transcription of ribosomal RNA (rRNA) genes and production of rRNA, the primary component of ribosomes. Pol I is a multisubunit enzyme composed of 6 to 14 polypeptides, depending on the species. Most of the mass of the pol I complex derives from the 2 largest subunits, Rpa1 and Rpa2 in yeast. POLR1B is homologous to Rpa2.

Application Notes

Optimal dilution of the POLR1B antibody should be determined by the researcher.

Immunogen

E. coli-derived recombinant human protein (amino acids H18-V1135) was used as the immunogen for the POLR1B antibody.

Storage

After reconstitution, the POLR1B antibody can be stored for up to one month at 4°C. For long-term, aliquot and store at

-20oC. Avoid repeated freezing and thawing.