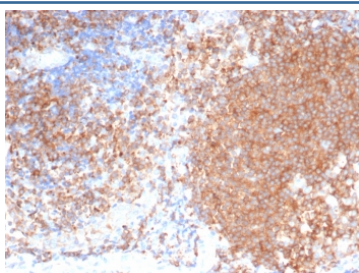


## Polo like kinase 1 Antibody / PLK1 [clone PLK1/7122] (V4413)

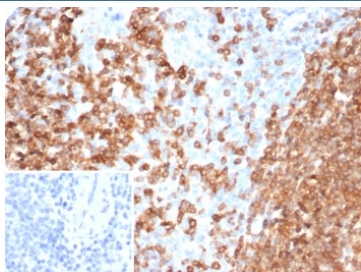
Catalog No.	Formulation	Size
V4413-100UG	0.2 mg/ml in 1X PBS with 0.1 mg/ml BSA (US sourced), 0.05% sodium azide	100 ug
V4413-20UG	0.2 mg/ml in 1X PBS with 0.1 mg/ml BSA (US sourced), 0.05% sodium azide	20 ug
V4413SAF-100UG	1 mg/ml in 1X PBS; BSA free, sodium azide free	100 ug

[Bulk quote request](#)

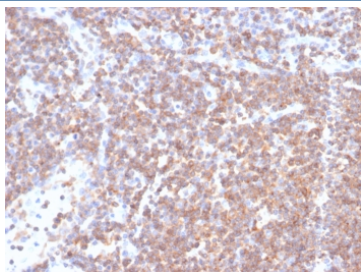
<b>Availability</b>	1-3 business days
<b>Species Reactivity</b>	Human
<b>Format</b>	Purified
<b>Host</b>	Mouse
<b>Clonality</b>	Monoclonal (mouse origin)
<b>Isotype</b>	Mouse IgG1, kappa
<b>Clone Name</b>	PLK1/7122
<b>Purity</b>	Protein A/G affinity
<b>UniProt</b>	P53350
<b>Localization</b>	Nucleus, Cytoplasm
<b>Applications</b>	ELISA (Order BSA-free Format For Coating) : Immunohistochemistry (FFPE) : 1-2ug/ml for 30 minutes at RT
<b>Limitations</b>	This Polo like kinase 1 antibody is available for research use only.



IHC staining of FFPE human tonsil tissue with Polo like kinase 1 antibody (clone PLK1/7122). HIER: boil tissue sections in pH 9 10mM Tris with 1mM EDTA for 20 min and allow to cool before testing.



IHC staining of FFPE human spleen tissue with Polo like kinase 1 antibody (clone PLK1/7122). Inset: PBS used in place of primary Ab (secondary Ab negative control).  
HIER: boil tissue sections in pH 9 10mM Tris with 1mM EDTA for 20 min and allow to cool before testing.



IHC staining of FFPE human lymph node tissue with Polo like kinase 1 antibody (clone PLK1/7122). HIER: boil tissue sections in pH 9 10mM Tris with 1mM EDTA for 20 min and allow to cool before testing.

## Description

Plk (for polo-like kinase) encodes a serine/threonine kinase that is closely related to polo and CDC5, genes that are required for passage through mitosis in *Drosophila* and *Saccharomyces*, respectively. Polo and CDC5 both code for proteins that are involved in regulating the function of the mitotic spindle. Plk protein accumulates in the cell during the S and G2 phases of the cell cycle; Plk protein content and catalytic activity peak at the onset of mitosis, followed by a rapid reduction after mitosis. Plk expression is detectable in mitotically active tissues such as colon and placenta, as well as in tumors of various origins. It has also been suggested that Plk may serve as a marker of cell proliferation.

## Application Notes

Optimal dilution of the Polo like kinase 1 antibody should be determined by the researcher.

## Immunogen

A recombinant fragment of human protein (within amino acids 1-200) was used as the immunogen for the Polo like kinase 1 antibody.

## Storage

Aliquot the Polo like kinase 1 antibody and store frozen at -20oC or colder. Avoid repeated freeze-thaw cycles.