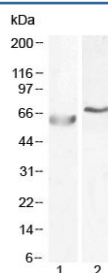


## POLL Antibody (R34718)

Catalog No.	Formulation	Size
R34718-100UG	0.5 mg/ml in 1X TBS, pH7.3, with 0.5% BSA (US sourced) and 0.02% sodium azide	100 ug

[Bulk quote request](#)

Availability	1-3 business days
Species Reactivity	Human
Format	Antigen affinity purified
Host	Goat
Clonality	Polyclonal (goat origin)
Isotype	Goat Ig
Purity	Antigen affinity
Gene ID	27343
Applications	Western Blot : 0.5-1ug/ml ELISA (peptide) LOD : 1:32000
Limitations	This POLL antibody is available for research use only.



Western blot testing of human 1) A549 and 2) HepG2 cell lysate with POLL antibody at 0.5ug/ml and 1ug/ml, respectively. Predicted molecular weight ~63 kDa, also observed at ~68 kDa.

## Description

Additional name(s) for this target protein: DNA polymerase lambda, Pol Lambda, DNA polymerase beta-2, Pol beta2

## Application Notes

Optimal dilution of the POLL antibody should be determined by the researcher.

1. This POLL antibody may cross react with Pol beta (NP\_002681).

## Immunogen

Amino acids LGLPYREPAERDW were used as the immunogen for this POLL antibody.

## Storage

Aliquot and store the POLL antibody at -20oC.