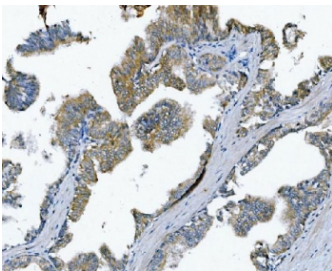


Poliovirus Receptor Antibody / PVR / CD155 (RQ6336)

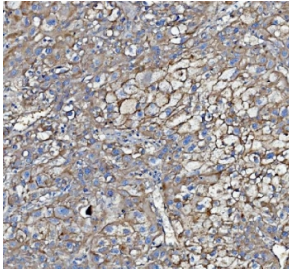
| Catalog No. | Formulation | Size |
|-------------|---|--------|
| RQ6336 | 0.5mg/ml if reconstituted with 0.2ml sterile DI water | 100 ug |

Bulk quote request

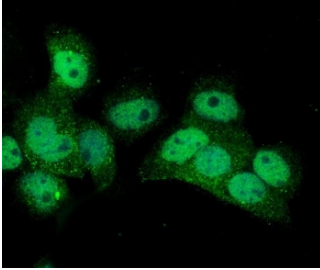
| | |
|---------------------------|--|
| Availability | 1-3 business days |
| Species Reactivity | Human |
| Format | Purified |
| Host | Rabbit |
| Clonality | Polyclonal (rabbit origin) |
| Isotype | Rabbit IgG |
| Purity | Antigen affinity purified |
| Buffer | Lyophilized from 1X PBS with 2% Trehalose |
| UniProt | P15151 |
| Applications | Western Blot : 0.5-1ug/ml Immunohistochemistry (FFPE) : 2-5ug/ml Immunofluorescence (FFPE) : 5ug/ml Flow Cytometry : 1-3ug/million cells Direct ELISA : 0.1-0.5ug/ml |
| Limitations | This Poliovirus Receptor antibody is available for research use only. |



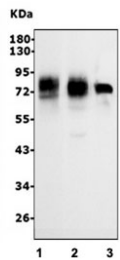
IHC staining of FFPE human prostate cancer with Poliovirus Receptor antibody. HIER: boil tissue sections in pH8 EDTA for 20 min and allow to cool before testing.



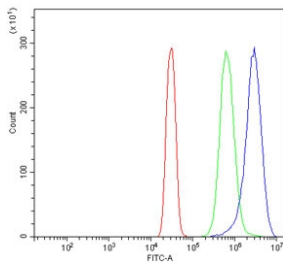
IHC staining of FFPE human liver cancer with Poliovirus Receptor antibody. HIER: boil tissue sections in pH8 EDTA for 20 min and allow to cool before testing.



Immunofluorescent staining of FFPE human A431 cells with Poliovirus Receptor antibody (green) and DAPI nuclear stain (blue). HIER: steam section in pH6 citrate buffer for 20 min.



Western blot testing of human 1) HeLa, 2) A549 and 3) HT1080 cell lysate with Poliovirus Receptor antibody. Predicted molecular weight: 40-45 kDa (multiple isoforms), but may be observed at higher molecular weights due to glycosylation.



Flow cytometry testing of human SiHa cells with Poliovirus Receptor antibody at 1ug/million cells (blocked with goat sera); Red=cells alone, Green=isotype control, Blue= Poliovirus Receptor antibody.

Description

The poliovirus receptor is a protein that in humans is encoded by the PVR gene. The gene is specific to the primate lineage, and serves as a cellular receptor for poliovirus in the first step of poliovirus replication.

Application Notes

Optimal dilution of the Poliovirus Receptor antibody should be determined by the researcher.

Immunogen

Recombinant human protein (amino acids D28-E331) was used as the immunogen for the Poliovirus Receptor antibody.

Storage

After reconstitution, the Poliovirus Receptor antibody can be stored for up to one month at 4oC. For long-term, aliquot and store at -20oC. Avoid repeated freezing and thawing.

