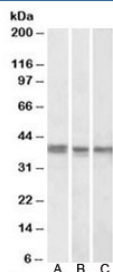


## POLDIP2 Antibody (R34668)

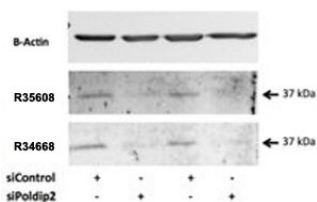
Catalog No.	Formulation	Size
R34668-100UG	0.5 mg/ml in 1X TBS, pH7.3, with 0.5% BSA (US sourced) and 0.02% sodium azide	100 ug

[Bulk quote request](#)

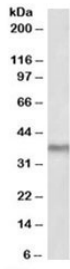
<b>Availability</b>	1-3 business days
<b>Species Reactivity</b>	Human, Mouse, Rat
<b>Predicted Reactivity</b>	Dog, Cow
<b>Format</b>	Antigen affinity purified
<b>Host</b>	Goat
<b>Clonality</b>	Polyclonal (goat origin)
<b>Isotype</b>	Goat Ig
<b>Purity</b>	Antigen affinity
<b>Gene ID</b>	26073
<b>Applications</b>	Western Blot : 1-3ug/ml ELISA (peptide) LOD : 1:8000
<b>Limitations</b>	This POLDIP2 antibody is available for research use only.



Western blot testing of K562 [A], MCF7 [B] and mouse liver [C] lysates with POLDIP2 antibody at 1ug/ml. Although the theoretical mass is ~42 kDa, POLDIP2 contains an N-terminal mitochondrial targeting sequence that is cleaved upon import, producing a mature ~37 kDa species that predominates in endogenous samples.



Western blot testing of rat VSMC lysate with POLDIP2 antibody at 0.5ug/ml (Cat # [R35068](#) and R34668). Signal is reduced by specific siRNA but not control.



Western blot of mouse liver lysate with POLDIP2 antibody at 2ug/ml. Although the theoretical mass is ~42 kDa, POLDIP2 contains an N-terminal mitochondrial targeting sequence that is cleaved upon import, producing a mature ~37 kDa species that predominates in endogenous samples.

## Description

Additional name(s) for this target protein: Polymerase delta-interacting protein 2

## Application Notes

Optimal dilution of the POLDIP2 antibody should be determined by the researcher.

## Immunogen

Amino acids KTHTYYQVLIDARDC were used as the immunogen for this POLDIP2 antibody.

## Storage

Aliquot and store the POLDIP2 antibody at -20oC.