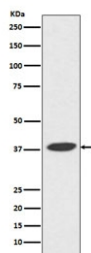


POLB Antibody / DNA Polymerase beta [clone ACGH-16] (RQ5162)

Catalog No.	Formulation	Size
RQ5162	Antibody in PBS with 0.02% sodium azide, 50% glycerol and 0.4-0.5mg/ml BSA	100 ul

[Bulk quote request](#)

Availability	1-2 weeks
Species Reactivity	Human
Format	Purified
Clonality	Rabbit Monoclonal
Isotype	Rabbit IgG
Clone Name	ACGH-16
Purity	Affinity purified
UniProt	P06746
Applications	Western Blot : 1:500-1:2000
Limitations	This POLB antibody is available for research use only.



Western blot testing with POLB antibody. Predicted molecular weight ~38 kDa.

Description

The protein encoded by this gene is a DNA polymerase involved in base excision and repair, also called gap-filling DNA synthesis. The encoded protein, acting as a monomer, is normally found in the cytoplasm, but it translocates to the nucleus upon DNA damage. [RefSeq]

Application Notes

Optimal dilution of the POLB antibody should be determined by the researcher.

Immunogen

A synthetic peptide specific to human DNA Polymerase beta / POLB was used as the immunogen for the POLB antibody.

Storage

Store the POLB antibody at -20oC.