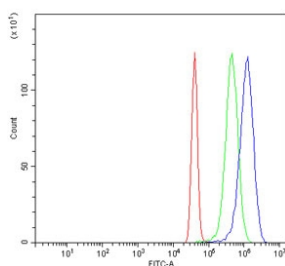


POLA2 Antibody / DNA polymerase alpha subunit B (RQ6788)

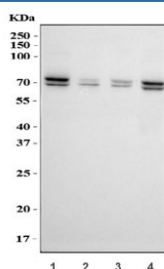
Catalog No.	Formulation	Size
RQ6788	0.5mg/ml if reconstituted with 0.2ml sterile DI water	100 ug

[Bulk quote request](#)

Availability	1-3 business days
Species Reactivity	Human
Format	Antigen affinity purified
Host	Rabbit
Clonality	Polyclonal (rabbit origin)
Isotype	Rabbit IgG
Purity	Antigen affinity purified
Buffer	Lyophilized from 1X PBS with 2% Trehalose
UniProt	Q14181
Applications	Western Blot : 1-2ug/ml Flow Cytometry : 1-3ug/million cells Direct ELISA : 0.1-0.5ug/ml
Limitations	This POLA2 antibody is available for research use only.



Flow cytometry testing of human U-251 cells with POLA2 antibody at 1ug/million cells (blocked with goat sera); Red=cells alone, Green=isotype control, Blue= POLA2 antibody.



Western blot testing of human 1) HeLa, 2) HepG2, 3) COLO-320 and 4) MCF7 cell lysate with POLA2 antibody. Expected molecular weight: 66-70 kDa.

Description

DNA polymerase alpha subunit 2/B is an enzyme that in humans is encoded by the POLA2 gene. POLA2 may play an essential role at the early stage of chromosomal DNA replication by coupling the polymerase alpha/primase complex to the cellular replication machinery (By similarity).

Application Notes

Optimal dilution of the POLA2 antibody should be determined by the researcher.

Immunogen

Recombinant human protein (amino acids N267-P579) was used as the immunogen for the POLA2 antibody.

Storage

After reconstitution, the POLA2 antibody can be stored for up to one month at 4oC. For long-term, aliquot and store at -20oC. Avoid repeated freezing and thawing.