

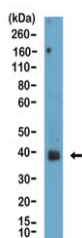
Podoplanin Antibody [clone RM449] (R20464)

Catalog No.	Formulation	Size
R20464-0.1ML	Antibody in PBS with 50% glycerol, 1% BSA and 0.09% sodium azide	100 ul

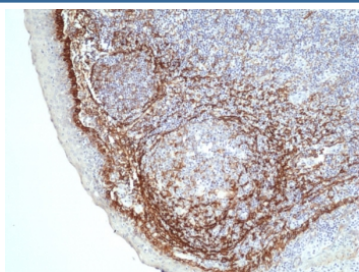
Recombinant **RABBIT MONOCLONAL**

[Bulk quote request](#)

Availability	1-3 business days
Species Reactivity	Human
Format	Purified
Host	Rabbit
Clonality	Recombinant Rabbit Monoclonal
Isotype	Rabbit IgG
Clone Name	RM449
Purity	Protein A purified from animal origin-free supernatant
UniProt	Q86YL7
Localization	Cell surface, cytoplasmic
Applications	Immunohistochemistry (FFPE) : 1:50-1:100 Western Blot : 1:50-1:100
Limitations	This recombinant Podoplanin antibody is available for research use only.



Western blot testing of human prostate tissue lysate with Podoplanin antibody at 1:100.
Predicted molecular weight: 25-36 kDa depending on glycosylation level.



IHC staining of FFPE human tonsil tissue with recombinant Podoplanin antibody at 1:100.

Description

This antibody reacts to human Podoplanin (Gp36).

Application Notes

The stated application concentrations are suggested starting points. Titration of the recombinant Podoplanin antibody may be required due to differences in protocols and secondary/substrate sensitivity.

Immunogen

Recombinant human Podoplanin protein was used as the immunogen for the recombinant Podoplanin antibody.

Storage

Store the recombinant Podoplanin antibody at -20oC.