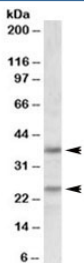


## Podoplanin Antibody (R33852)

Catalog No.	Formulation	Size
R33852-100UG	0.5 mg/ml in 1X TBS, pH7.3, with 0.5% BSA (US sourced) and 0.02% sodium azide	100 ug

[Bulk quote request](#)

<b>Availability</b>	1-3 business days
<b>Species Reactivity</b>	Human
<b>Predicted Reactivity</b>	Dog
<b>Format</b>	Antigen affinity purified
<b>Host</b>	Goat
<b>Clonality</b>	Polyclonal (goat origin)
<b>Isotype</b>	Goat Ig
<b>Purity</b>	Antigen affinity
<b>Gene ID</b>	10630
<b>Applications</b>	Western Blot : 1-3ug/ml ELISA (peptide) LOD : 1:1000
<b>Limitations</b>	This Podoplanin antibody is available for research use only.



Western blot testing of human cerebellum lysate with Podoplanin antibody at 1ug/ml.  
Predicted molecular weight ~25/36kDa (unmodified/glycosylated).

### Description

Additional name(s) for this target protein: PDPN; AGGRUS; Glycoprotein 36 (GP36); GP38; GP40; HT1A-1; OTS8; PA2.26

### Application Notes

Optimal dilution of the Podoplanin antibody should be determined by the researcher.

## **Immunogen**

Amino acids EKVDGDTQTTVEKD were used as the immunogen for this Podoplanin antibody.

## **Storage**

Aliquot and store the Podoplanin antibody at -20oC.