

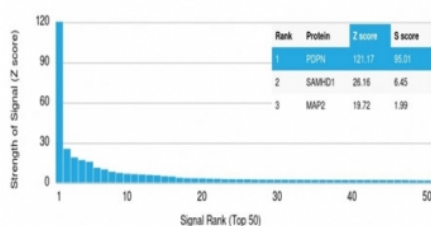
Podoplanin Antibody [clone PDPN/1433] (V3404)

Catalog No.	Formulation	Size
V3404-100UG	0.2 mg/ml in 1X PBS with 0.1 mg/ml BSA (US sourced) and 0.05% sodium azide	100 ug
V3404-20UG	0.2 mg/ml in 1X PBS with 0.1 mg/ml BSA (US sourced) and 0.05% sodium azide	20 ug
V3404SAF-100UG	1 mg/ml in 1X PBS; BSA free, sodium azide free	100 ug

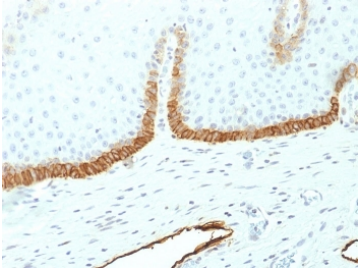
[Bulk quote request](#)

Availability	1-3 business days
Species Reactivity	Human
Format	Purified
Host	Mouse
Clonality	Monoclonal (mouse origin)
Isotype	Mouse IgG1, kappa
Clone Name	PDPN/1433
Purity	Protein G affinity chromatography
UniProt	Q86YL7
Localization	Cell surface, cytoplasmic
Applications	ELISA (order BSA/sodium Azide-free Format For Coating) : Immunofluorescence : 1-2ug/ml Immunohistochemistry (FFPE) : 1-2ug/ml for 30 min at RT
Limitations	This Podoplanin antibody is available for research use only.

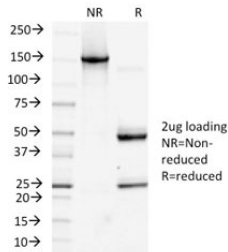
Human Protein Microarray Specificity Validation



Analysis of HuProt(TM) microarray containing more than 19,000 full-length human proteins using Podoplanin antibody (clone PDPN/1433). These results demonstrate the foremost specificity of the PDPN/1433 mAb. Z- and S- score: The Z-score represents the strength of a signal that an antibody (in combination with a fluorescently-tagged anti-IgG secondary Ab) produces when binding to a particular protein on the HuProt(TM) array. Z-scores are described in units of standard deviations (SD's) above the mean value of all signals generated on that array. If the targets on the HuProt(TM) are arranged in descending order of the Z-score, the S-score is the difference (also in units of SD's) between the Z-scores. The S-score therefore represents the relative target specificity of an Ab to its intended target.



IHC testing of FFPE human cervical tissue with Podoplanin antibody (clone PDPN/1433). Required HIER: boil tissue sections in 10mM citrate buffer, pH 6, for 10-20 min followed by cooling at RT for 20 min.



SDS-PAGE analysis of purified, BSA-free Podoplanin antibody (clone PDPN/1433) as confirmation of integrity and purity.

Description

Podoplanin (PDPN) is a muco-protein which localizes in stromal cells of peripheral lymphoid tissue and thymic epithelial cells. As a regulator of the lymphatic endothelium, podoplanin probably plays a role in maintaining the unique shape of podocytes. It is selectively expressed in lymphatic endothelium as well as lymphoangiomas, Kaposi sarcomas, and in a subset of angiosarcomas with probable lymphatic differentiation. Recent studies have also shown podoplanin to be a highly sensitive and relatively specific marker for epithelioid mesothelioma. Therefore, it can be used in a panel to distinguish mesotheliomas or mesothelial cells from pulmonary carcinomas.

Application Notes

Optimal dilution of the Podoplanin antibody should be determined by the researcher.

Immunogen

A human recombinant partial protein corresponding to amino acids 24-126 was used as the immunogen for the Podoplanin antibody.

Storage

Store the Podoplanin antibody at 2-8oC (with azide) or aliquot and store at -20oC or colder (without azide).