

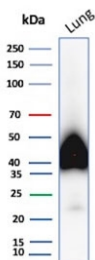
Podoplanin Antibody / PA2.26 antigen / Gp36 [clone PDPN/8950R] (V4702)

Catalog No.	Formulation	Size
V4702-100UG	0.2 mg/ml in 1X PBS with 0.1 mg/ml BSA (US sourced), 0.05% sodium azide	100 ug
V4702-20UG	0.2 mg/ml in 1X PBS with 0.1 mg/ml BSA (US sourced), 0.05% sodium azide	20 ug
V4702SAF-100UG	1 mg/ml in 1X PBS; BSA free, sodium azide free	100 ug

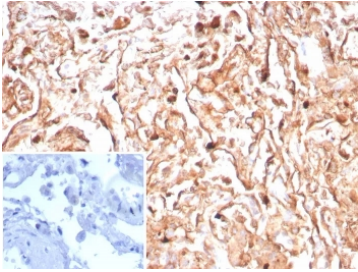
Recombinant **RABBIT MONOCLONAL**

[Bulk quote request](#)

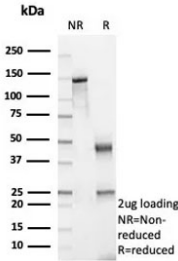
Availability	1-3 business days
Species Reactivity	Human
Format	Purified
Host	Rabbit
Clonality	Recombinant Rabbit Monoclonal
Isotype	Rabbit IgG, kappa
Clone Name	PDPN/8950R
Purity	Protein A/G affinity
UniProt	Q86YL7
Localization	Cell surface
Applications	Immunohistochemistry (FFPE) : 1-2ug/ml for 30 min at RT Western Blot : 2-4ug/ml
Limitations	This Podoplanin antibody is available for research use only.



Western blot testing of human lung tissue lysate with Podoplanin antibody. Predicted molecular weight ~25 kDa but may be observed at higher molecular weights due to glycosylation.



IHC staining of FFPE human tonsil tissue with Podoplanin antibody (clone PDPN/8950R). Inset: PBS used in place of primary Ab (secondary Ab negative control).
HIER: boil tissue sections in pH 9 10mM Tris with 1mM EDTA for 20 min and allow to cool before testing.



SDS-PAGE analysis of purified, BSA-free Podoplanin antibody (clone PDPN/8950R) as confirmation of integrity and purity.

Description

It recognizes a muco-protein of 38-43kDa, which is identified as Podoplanin (PDPN), also called Glycoprotein 36 (Gp36). It localizes in stromal cells of peripheral lymphoid tissue and thymic epithelial cells. As a regulator of the lymphatic endothelium, podoplanin probably plays a role in maintaining the unique shape of podocytes. It is selectively expressed in lymphatic endothelium as well as lymphoangiomas, Kaposi sarcomas, and in a subset of angiosarcomas with probable lymphatic differentiation. Recent studies have also shown podoplanin to be a highly sensitive and relatively specific marker for epithelioid mesothelioma. Therefore, it can be used in a panel to distinguish mesotheliomas or mesothelial cells from pulmonary carcinomas.

Application Notes

Optimal dilution of the Podoplanin antibody should be determined by the researcher.

Immunogen

A recombinant fragment of human PDPN protein was used as the immunogen for the Podoplanin antibody.

Storage

Aliquot the Podoplanin antibody and store frozen at -20oC or colder. Avoid repeated freeze-thaw cycles.