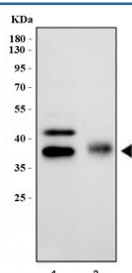


Podoplanin Antibody (gp36) (R30760)

Catalog No.	Formulation	Size
R30760	0.5mg/ml if reconstituted with 0.2ml sterile DI water	100 ug

Bulk quote request

Availability	1-3 business days
Species Reactivity	Mouse, Rat
Format	Antigen affinity purified
Host	Rabbit
Clonality	Polyclonal (rabbit origin)
Isotype	Rabbit IgG
Purity	Antigen affinity
Buffer	Lyophilized from 1X PBS with 2% Trehalose and 0.025% sodium azide
UniProt	Q64294
Applications	Western Blot : 0.5-1ug/ml
Limitations	This Podoplanin antibody is available for research use only.



Western blot testing of Podoplanin antibody and Lane 1: rat lung; 2: mouse lung tissue lysate. Predicted molecular weight ~25/36 kDa (unmodified/glycosylated).

Description

PDPN (Podoplanin), also called T1A, T1A2, GP36, OTS8 or AGGRUS, is a protein that in humans is encoded by the PDPN gene. This gene encodes a type-I integral membrane glycoprotein with diverse distribution in human tissues. The PDPN gene is mapped to chromosome 1 by the International radiation Hybrid mapping consortium. The physiological function of PDPN may be related to its mucin-type character. The specific function of this protein has not been determined but it has been proposed as a marker of lung injury. Immunohistochemical analysis of PDPN in placenta, kidney, lung, and nasal polyps showed expression at the apical plasma membrane of vascular endothelial cells and in alveolar epithelial cells. Overexpression of rat PDPN in human and rodent endothelial cells promoted formation of elongated cell

extensions and significantly increased endothelial cell adhesion, migration, and tube formation. Inhibition of PDPN expression by small interfering RNAs decreased cell adhesion in cultured human dermal lymphatic endothelial cells.

Application Notes

The stated application concentrations are suggested starting amounts. Titration of the Podoplanin antibody may be required due to differences in protocols and secondary/substrate sensitivity.

Immunogen

An amino acid sequence from the C-terminus of rat Podoplanin/gp36 (VVMRKISGRFSP) was used as the immunogen for this Podoplanin antibody.

Storage

After reconstitution, the Podoplanin antibody can be stored for up to one month at 4°C. For long-term, aliquot and store at -20°C. Avoid repeated freezing and thawing.