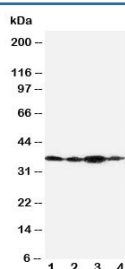


Podoplanin Antibody gp36 (R30481)

Catalog No.	Formulation	Size
R30481	0.5mg/ml if reconstituted with 0.2ml sterile DI water	100 ug

[Bulk quote request](#)

Availability	1-3 business days
Species Reactivity	Human
Format	Antigen affinity purified
Host	Rabbit
Clonality	Polyclonal (rabbit origin)
Isotype	Rabbit IgG
Purity	Antigen affinity
Buffer	Lyophilized from 1X PBS with 2.5% BSA and 0.025% sodium azide/thimerosal
UniProt	Q86YL7
Applications	Western Blot : 0.5-1ug/ml
Limitations	This Podoplanin antibody is available for research use only.



Western blot testing of Podoplanin antibody and Lane 1: SMMC-7721; 2: 293T; 3: HeLa. Predicted molecular weight ~25/36kDa (unmodified/glycosylated).

Description

Podoplanin is a protein that in humans is encoded by the PDPN gene. This gene encodes a type-I integral membrane glycoprotein with diverse distribution in human tissues. The International radiation Hybrid mapping consortium mapped the gene to chromosome 1. It is a typical type I membrane glycoprotein, with an N-terminal signal sequence, a signal sequence cleavage site, a C-terminal hydrophobic stretch, and a short cytoplasmic tail. It has been described as a differentiation antigen and influenza-virus receptor, and a marker of lung injury.

Application Notes

The stated application concentrations are suggested starting amounts. Titration of the Podoplanin antibody may be required due to differences in protocols and secondary/substrate sensitivity.

Immunogen

Amino acids VVVMRKMSGRYSP were used as the immunogen for this Podoplanin antibody.

Storage

After reconstitution, the Podoplanin antibody can be stored for up to one month at 4oC. For long-term, aliquot and store at -20oC. Avoid repeated freezing and thawing.