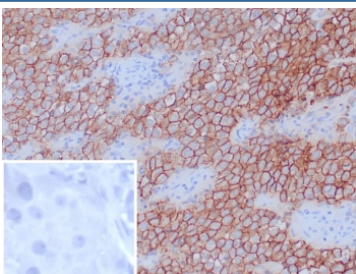


Podoplanin Antibody [clone D2-40] (V5650)

Catalog No.	Formulation	Size
V5650-100UG	0.2 mg/ml in 1X PBS with 0.1 mg/ml BSA (US sourced), 0.05% sodium azide	100 ug
V5650-20UG	0.2 mg/ml in 1X PBS with 0.1 mg/ml BSA (US sourced), 0.05% sodium azide	20 ug
V5650SAF-100UG	1 mg/ml in 1X PBS; BSA free, sodium azide free	100 ug

[Bulk quote request](#)

Availability	1-3 business days
Species Reactivity	Human
Format	Purified
Host	Mouse
Clonality	Monoclonal (mouse origin)
Isotype	Mouse IgG1, kappa
Clone Name	D2-40
Purity	Protein G affinity
UniProt	Q86YL7
Localization	Cytoplasm, Membrane
Applications	Immunohistochemistry (FFPE) : 1-2ug/ml
Limitations	This Podoplanin antibody is available for research use only.



IHC staining of FFPE human tonsil tissue with Podoplanin antibody (clone D2-40). Inset: PBS used in place of primary Ab (secondary Ab negative control). HIER: boil tissue sections in pH 9 10mM Tris with 1mM EDTA for 20 min and allow to cool before testing.

Description

Podoplanin is a transmembrane mucoprotein (38 kDa) recognized by the D2-40 monoclonal antibody. Podoplanin is specifically expressed in the endothelium of lymphatic capillaries but not in the blood vasculature. In normal skin and

kidney, podoplanin is co-localized with VEGFR3/FLT4, another marker for lymphatic endothelial cells. Podoplanin is selectively expressed in lymphatic endothelium as well as Lymphangiomas, Kaposi's Sarcomas and in subset Angiosarcomas with probable lymphatic differentiation. Podoplanin has also been shown to be expressed in Epithelioid Mesotheliomas, Hemangioblastomas and Seminomas.

Application Notes

Optimal dilution of the Podoplanin antibody should be determined by the researcher.

Immunogen

Resected tissue from dysgerminoma of the ovary was used as the immunogen for the Podoplanin antibody.

Storage

Aliquot the Podoplanin antibody and store frozen at -20oC or colder. Avoid repeated freeze-thaw cycles.