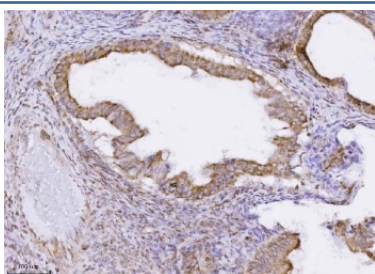


## PMPCB Antibody / MPPB / Beta-MPP [clone 9F13E4] (RQ7116)

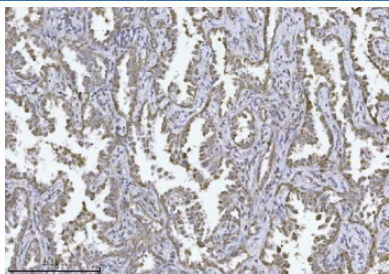
Catalog No.	Formulation	Size
RQ7116	0.5mg/ml if reconstituted with 0.2ml sterile DI water	100 ug

**Bulk quote request**

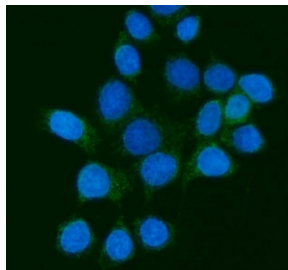
<b>Availability</b>	1-3 business days
<b>Species Reactivity</b>	Human, Mouse, Rat
<b>Format</b>	Antigen affinity purified
<b>Clonality</b>	Monoclonal (mouse origin)
<b>Isotype</b>	Mouse IgG2b
<b>Clone Name</b>	9F13E4
<b>Purity</b>	Antigen affinity purified
<b>Buffer</b>	Lyophilized from 1X PBS with 2% Trehalose
<b>UniProt</b>	O75439
<b>Localization</b>	Cytoplasmic
<b>Applications</b>	Western Blot : 0.5-1ug/ml Immunohistochemistry (FFPE) : 2-5ug/ml Immunofluorescence : 5ug/ml Flow Cytometry : 1-3ug/million cells
<b>Limitations</b>	This PMPCB antibody is available for research use only.



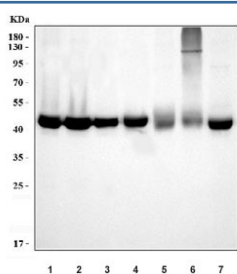
IHC staining of FFPE human ovarian carcinoma tissue with PMPCB antibody. HIER: boil tissue sections in pH8 EDTA for 20 min and allow to cool before testing.



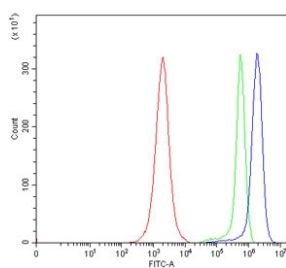
IHC staining of FFPE human adenocarcinoma of the lung tissue with PMPCB antibody. HIER: boil tissue sections in pH8 EDTA for 20 min and allow to cool before testing.



Immunofluorescent staining of FFPE human MCF7 cells with PMPCB antibody (green) and DAPI nuclear stain (blue). HIER: steam section in pH6 citrate buffer for 20 min.



Western blot testing of 1) human MCF7, 2) human HepG2, 3) human HeLa, 4) human HCCT, 5) rat liver, 6) rat RH35 and 7) mouse liver tissue lysate with PMPCB antibody. Expected molecular weight: 43-54 kDa.



Flow cytometry testing of human JK cells with PMPCB antibody at 1ug/million cells (blocked with goat sera); Red=cells alone, Green=isotype control, Blue= PMPCB antibody.

## Description

Mitochondrial-processing peptidase subunit beta is an enzyme that in humans is encoded by the PMPCB gene. This gene is a member of the peptidase M16 family and encodes a protein with a zinc-binding motif. This protein is located in the mitochondrial matrix and catalyzes the cleavage of the leader peptides of precursor proteins newly imported into the mitochondria, though it only functions as part of a heterodimeric complex.

## Application Notes

Optimal dilution of the PMPCB antibody should be determined by the researcher.

## Immunogen

Recombinant human protein (amino acids E23-Q479) was used as the immunogen for the PMPCB antibody.

## Storage

After reconstitution, the PMPCB antibody can be stored for up to one month at 4oC. For long-term, aliquot and store at -20oC. Avoid repeated freezing and thawing.

