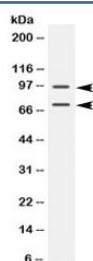


PML Antibody / Promyelocytic leukemia protein (R32553)

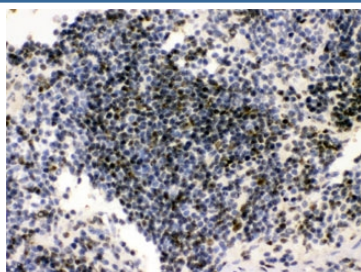
Catalog No.	Formulation	Size
R32553	0.5mg/ml if reconstituted with 0.2ml sterile DI water	100 ug

Bulk quote request

Availability	1-3 business days
Species Reactivity	Mouse
Format	Antigen affinity purified
Host	Rabbit
Clonality	Polyclonal (rabbit origin)
Isotype	Rabbit IgG
Purity	Antigen affinity
Buffer	Lyophilized from 1X PBS with 2.5% BSA and 0.025% sodium azide
UniProt	Q60953
Localization	Nuclear, cytoplasmic (isoform dependent)
Applications	Western Blot : 0.5-1ug/ml IHC (FFPE) : 1-2ug/ml
Limitations	This PML antibody is available for research use only.



Western blot testing of mouse testis lysate with PML antibody at 0.5ug/ml. Expected molecular weight: multiple isoforms from 47-97 kDa.



IHC testing of FFPE mouse spleen with PML antibody at 1ug/ml. HIER: steam section in pH6 citrate buffer for 20 min.

Description

Promyelocytic leukemia protein functions via its association with PML-nuclear bodies (PML-NBs) in a wide range of important cellular processes, including tumor suppression, transcriptional regulation, apoptosis, senescence, DNA damage response, and viral defense mechanisms.

Application Notes

Optimal dilution of the PML antibody should be determined by the researcher.

Immunogen

Amino acids 140-177 (LADFWCFECEQLICKCFEAHQWYLKHEARPLADLRDN) from the mouse protein were used as the immunogen for the PML antibody.

Storage

After reconstitution, the PML antibody can be stored for up to one month at 4°C. For long-term, aliquot and store at -20°C. Avoid repeated freezing and thawing.