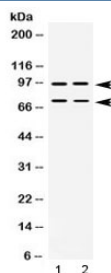


PML Antibody / Promyelocytic leukemia protein (R32552)

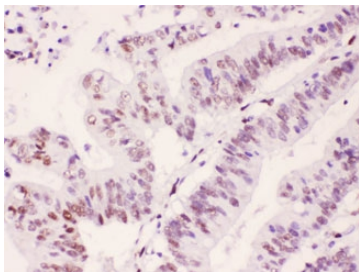
Catalog No.	Formulation	Size
R32552	0.5mg/ml if reconstituted with 0.2ml sterile DI water	100 ug

Bulk quote request

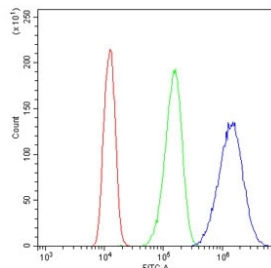
Availability	1-3 business days
Species Reactivity	Human, Mouse, Rat
Format	Antigen affinity purified
Host	Rabbit
Clonality	Polyclonal (rabbit origin)
Isotype	Rabbit IgG
Purity	Antigen affinity
Buffer	Lyophilized from 1X PBS with 2.5% BSA and 0.025% sodium azide
UniProt	P29590
Localization	Nuclear, cytoplasmic (isoform dependent)
Applications	Western Blot : 0.5-1ug/ml Immunohistochemistry (FFPE) : 1-2ug/ml Flow Cytometry : 1-3ug/million cells
Limitations	This PML antibody is available for research use only.



Western blot testing of human 1) SW620 and 2) U-2 OS lysate with PML antibody at 0.5ug/ml. Expected molecular weight: multiple isoforms from 47-97 kDa.



IHC testing of FFPE human intestinal cancer tissue with PML antibody at 1ug/ml. HIER: steam section in pH6 citrate buffer for 20 min.



Flow cytometry testing of human A431 cells with PML antibody at 1ug/10⁶ cells (blocked with goat sera); Red=cells alone, Green=isotype control, Blue= PML antibody.

Description

The protein encoded by this gene is a member of the tripartite motif (TRIM) family. The TRIM motif includes three zinc-binding domains, a RING, a B-box type 1 and a B-box type 2, and a coiled-coil region. This phosphoprotein localizes to nuclear bodies where it functions as a transcription factor and tumor suppressor. Its expression is cell-cycle related and it regulates the p53 response to oncogenic signals. The gene is often involved in the translocation with the retinoic acid receptor alpha gene associated with acute promyelocytic leukemia (APL). Extensive alternative splicing of this gene results in several variations of the protein's central and C-terminal regions; all variants encode the same N-terminus. Alternatively spliced transcript variants encoding different isoforms have been identified.

Application Notes

Differences in protocols and secondary/substrate sensitivity may require the PML antibody to be titrated for optimal performance.

Immunogen

Amino acids 141-179 (FECEQLLCAKCFEAHQWFLKHEARPLAELRNQSVREFLD) from the human protein were used as the immunogen for the PML antibody.

Storage

After reconstitution, the PML antibody can be stored for up to one month at 4°C. For long-term, aliquot and store at -20°C. Avoid repeated freezing and thawing.