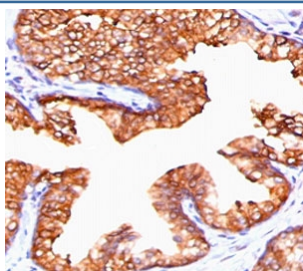


PMEPA1 Antibody / TMEPAI [clone PTAI1-1] (V7347)

Catalog No.	Formulation	Size
V7347-100UG	0.2 mg/ml in 1X PBS with 0.1 mg/ml BSA (US sourced) and 0.05% sodium azide	100 ug
V7347-20UG	0.2 mg/ml in 1X PBS with 0.1 mg/ml BSA (US sourced) and 0.05% sodium azide	20 ug
V7347SAF-100UG	1 mg/ml in 1X PBS; BSA free, sodium azide free	100 ug
V7347IHC-7ML	Prediluted in 1X PBS with 0.1 mg/ml BSA (US sourced) and 0.05% sodium azide; *For IHC use only*	7 ml

Bulk quote request

Availability	1-3 business days
Species Reactivity	Human
Format	Purified
Clonality	Monoclonal (mouse origin)
Isotype	Mouse IgG
Clone Name	PTAI1-1
Purity	Protein G affinity chromatography
UniProt	Q969W9
Localization	Cell surface, cytoplasm
Applications	Immunohistochemistry (FFPE) : 1-2ug/ml for 30 min at RT Prediluted IHC Only Format : incubate for 30 min at RT (1)
Limitations	This PMEPA1 antibody is available for research use only.



IHC staining of FFPE human prostate carcinoma with PMEPA1 antibody (clone PTAI1-1). HIER: boil tissue sections in pH 9 10mM Tris with 1mM EDTA for 10-20 min and allow to cool before testing.

Description

PMEPA1 (prostate transmembrane protein, androgen induced 1), or TMEPAI (Transmembrane prostate androgen induced protein) is a 287 amino acid single-pass membrane protein that contains WW-binding motifs and localizes to the cell membrane. Expressed at high levels in prostate, kidney and ovary, PMEPA1 interacts with NEDD4 and may play a role in regulating AR (androgen receptor) levels, specifically in prostate cells. Down regulation of PMEPA1 is observed in prostate tumors, suggesting that PMEPA1 may exhibit activity as a tumor suppressor. Overexpression of this protein may play a role in multiple types of cancer.

Application Notes

Optimal dilution of the PMEPA1 antibody should be determined by the researcher.

1. The prediluted format is supplied in a dropper bottle and is optimized for use in IHC. After epitope retrieval step (if required), drip mAb solution onto the tissue section and incubate at RT for 30 min.

Immunogen

Full-length recombinant human protein was used as the immunogen for the PMEPA1 antibody.

Storage

Store the PMEPA1 antibody at 2-8°C (with azide) or aliquot and store at -20°C or colder (without azide).