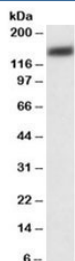


PMCA1 Antibody (R34585)

| Catalog No. | Formulation | Size |
|--------------|---|--------|
| R34585-100UG | 0.5 mg/ml in 1X TBS, pH7.3, with 0.5% BSA (US sourced) and 0.02% sodium azide | 100 ug |

[Bulk quote request](#)

| | |
|----------------------|---|
| Availability | 1-3 business days |
| Species Reactivity | Human |
| Predicted Reactivity | Cow, Dog, Mouse, Pig, Rat |
| Format | Antigen affinity purified |
| Host | Goat |
| Clonality | Polyclonal (goat origin) |
| Isotype | Goat Ig |
| Purity | Antigen affinity |
| Gene ID | 490 |
| Applications | Western Blot : 0.03-0.1ug/ml ELISA (peptide) LOD : 1:64000 |
| Limitations | This PMCA1 antibody is available for research use only. |



Western blot testing of HeLa lysate with PMCA1 antibody at 0.03ug/ml. Predicted molecular weight: ~135kDa.

Description

Additional name(s) for this target protein: Plasma membrane calcium-transporting ATPase 1, ATPase, Ca⁺⁺ transporting, plasma membrane 1; ATP2B1

Application Notes

Optimal dilution of the PMCA1 antibody should be determined by the researcher.

Immunogen

Amino acids KQDGALENRNKAKAQD were used as the immunogen for this PMCA1 antibody.

Storage

Aliquot and store the PMCA1 antibody at -20oC.