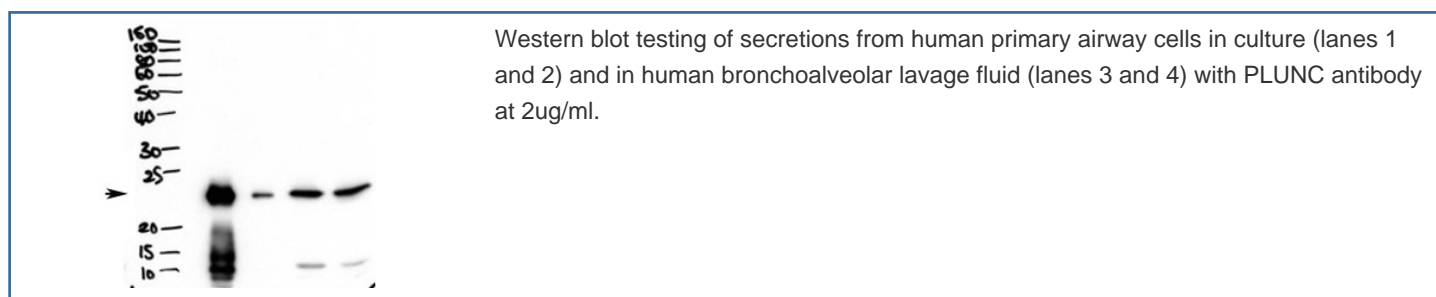


PLUNC Antibody / SPLUNC1 / BPIFA1 (R35560)

Catalog No.	Formulation	Size
R35560-100UG	0.5 mg/ml in 1X TBS, pH7.3, with 0.5% BSA (US sourced) and 0.02% sodium azide	100 ug

[Bulk quote request](#)

Availability	1-3 business days
Species Reactivity	Human
Format	Antigen affinity purified
Clonality	Polyclonal (goat origin)
Isotype	Goat Ig
Purity	Antigen affinity
Gene ID	51297
Applications	Western Blot : 1-3ug/ml ELISA (peptide) LOD : 1:128000
Limitations	This PLUNC antibody is available for research use only.



Description

Additional name(s) for this target protein: Palate lung and nasal epithelium clone protein; BPIFA1; BPI fold containing family A, member 1; short PLUNC1

Application Notes

Optimal dilution of the PLUNC antibody should be determined by the researcher.

Immunogen

Amino acids RDKQERIHLVLGDC were used as the immunogen for this PLUNC antibody.

Storage

Aliquot and store the PLUNC antibody at -20oC.