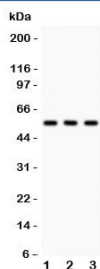


## PLTP Antibody / Phospholipid transfer protein (R31352)

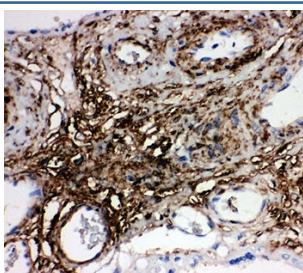
Catalog No.	Formulation	Size
R31352	0.5mg/ml if reconstituted with 0.2ml sterile DI water	100 ug

[Bulk quote request](#)

<b>Availability</b>	1-3 business days
<b>Species Reactivity</b>	Human
<b>Format</b>	Antigen affinity purified
<b>Host</b>	Rabbit
<b>Clonality</b>	Polyclonal (rabbit origin)
<b>Isotype</b>	Rabbit IgG
<b>Purity</b>	Antigen affinity
<b>Buffer</b>	Lyophilized from 1X PBS with 2.5% BSA and 0.025% sodium azide/thimerosal
<b>UniProt</b>	P55058
<b>Applications</b>	Western Blot : 0.5-1ug/ml IHC (FFPE) : 0.5-1ug/ml
<b>Limitations</b>	This PLTP antibody is available for research use only.



Western blot testing of PLTP antibody and 1. MCF7, 2. Raji and 3. HeLa lysate.  
Expected/observed size ~55KD



IHC-P: PLTP antibody testing of human placenta tissue

## Description

Phospholipid transfer protein is in humans encoded by the PLTP gene. This gene is mapped to 20q13.12. PLTP is one of at least two lipid transfer proteins found in human plasma. It transfers phospholipids from triglyceride-rich lipoproteins to high density lipoprotein (HDL). In addition to regulating the size of HDL particles, this protein may be involved in cholesterol metabolism. At least two transcript variants encoding different isoforms have been found for this gene.

## Application Notes

The stated application concentrations are suggested starting amounts. Titration of the PLTP antibody may be required due to differences in protocols and secondary/substrate sensitivity.

## Immunogen

An amino acid sequence from the middle region of human Phospholipid transfer protein (QLQEEERMVYVAFSEF) was used as the immunogen for this PLTP antibody.

## Storage

After reconstitution, the PLTP antibody can be stored for up to one month at 4°C. For long-term, aliquot and store at -20°C. Avoid repeated freezing and thawing.