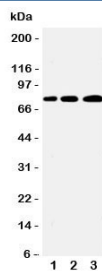


PLK2 Antibody / Polo-like kinase 2 (R31246)

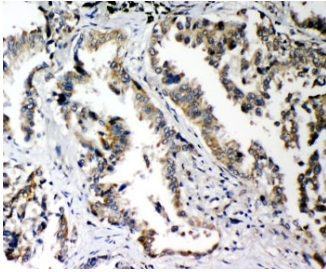
Catalog No.	Formulation	Size
R31246	0.5mg/ml if reconstituted with 0.2ml sterile DI water	100 ug

[Bulk quote request](#)

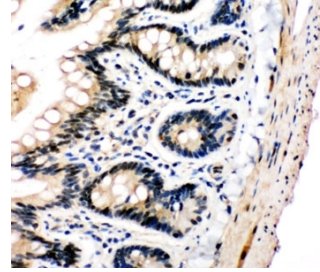
Availability	1-3 business days
Species Reactivity	Human, Mouse, Rat
Format	Antigen affinity purified
Host	Rabbit
Clonality	Polyclonal (rabbit origin)
Isotype	Rabbit IgG
Purity	Antigen affinity
Buffer	Lyophilized from 1X PBS with 2.5% BSA and 0.025% sodium azide/thimerosal
UniProt	Q9NYY3
Localization	Cytoplasmic, nuclear
Applications	Western Blot : 0.5-1ug/ml IHC (FFPE) : 0.5-1ug/ml Immunocytochemistry : 0.5-1ug/ml Flow Cytometry : 1-3ug/10 ⁶ cells
Limitations	This PLK2 antibody is available for research use only.



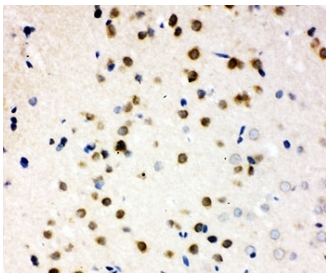
Western blot testing of PLK2 antibody and Lane 1: A431; 2: 293T; 3: COLO320 cell lysate. Predicted molecular weight ~78 kDa.



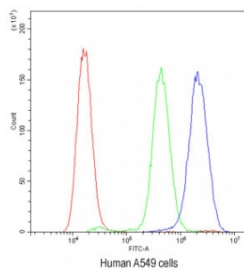
IHC-P: PLK2 antibody testing of human lung cancer tissue. HIER: steam section in pH6 citrate buffer for 20 min and allow to cool prior to staining.



IHC-P: PLK2 antibody testing of rat intestine tissue. HIER: steam section in pH6 citrate buffer for 20 min and allow to cool prior to staining.



IHC-P testing of PLK2 antibody and rat brain tissue. HIER: steam section in pH6 citrate buffer for 20 min and allow to cool prior to staining.



Flow cytometry testing of human A549 cells with PLK2 antibody at 1ug/10⁶ cells (blocked with goat sera); Red=cells alone, Green=isotype control, Blue=PLK2 antibody.

Description

Polo-like kinase 2, also known as SNK, is an enzyme that in humans is encoded by the PLK2 gene. It is a member of the polo family of serine/threonine protein kinases that have a role in normal cell division. The International Radiation Hybrid Mapping Consortium mapped the gene to chromosome 5. Polo-like kinase 2 is involved in synaptic plasticity, centriole duplication and G1/S phase transition. This gene plays a key role in synaptic plasticity and memory by regulating the Ras and Rap protein signalin: required for overactivity-dependent spine remodeling by phosphorylating the Ras activator RASGRF1 and the Rap inhibitor SIPA1L1 leading to their degradation by the proteasome.

Application Notes

The stated application concentrations are suggested starting amounts. Titration of the PLK2 antibody may be required due to differences in protocols and secondary/substrate sensitivity.

Immunogen

An amino acid sequence from the C-terminus of human Polo-like kinase 2 (SSELKNRMEYALNMLLQRCN) was used as the immunogen for this PLK2 antibody.

Storage

After reconstitution, the PLK2 antibody can be stored for up to one month at 4°C. For long-term, aliquot and store at -20°C. Avoid repeated freezing and thawing.