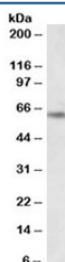


PLK1 Antibody (R35478)

Catalog No.	Formulation	Size
R35478-100UG	0.5 mg/ml in 1X TBS, pH7.3, with 0.5% BSA (US sourced) and 0.02% sodium azide	100 ug

[Bulk quote request](#)

Availability	1-3 business days
Species Reactivity	Human
Format	Antigen affinity purified
Host	Goat
Clonality	Polyclonal (goat origin)
Isotype	Goat Ig
Purity	Antigen affinity
Gene ID	5347
Applications	Western Blot : 0.3-1ug/ml ELISA (peptide) LOD : 1:16000
Limitations	This PLK1 antibody is available for research use only.



Western blot testing of HeLa nuclear lysate with PLK1 antibody at 0.3ug/ml. Predicted molecular weight ~68kDa.

Description

Additional name(s) for this target protein: Polo-like kinase 1, serine/threonine-protein kinase 13, STPK13

Application Notes

Optimal dilution of the PLK1 antibody should be determined by the researcher.

Immunogen

Amino acids QTDPTARPTINE were used as the immunogen for this PLK1 antibody.

Storage

Aliquot and store the PLK1 antibody at -20oC.