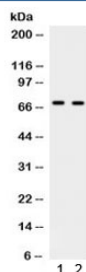


PLK1 Antibody (R32133)

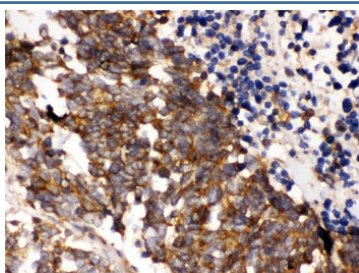
Catalog No.	Formulation	Size
R32133	0.5mg/ml if reconstituted with 0.2ml sterile DI water	100 ug

Bulk quote request

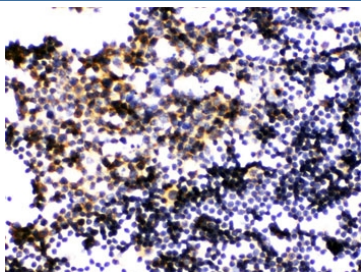
Availability	1-3 business days
Species Reactivity	Human, Mouse, Rat
Format	Antigen affinity purified
Clonality	Polyclonal (rabbit origin)
Isotype	Rabbit IgG
Purity	Antigen affinity
Buffer	Lyophilized from 1X PBS with 2.5% BSA and 0.025% sodium azide
UniProt	P53350
Localization	Nuclear, minor cytoplasmic
Applications	Western Blot : 0.1-0.5ug/ml IHC (FFPE) : 0.5-1ug/ml
Limitations	This PLK1 antibody is available for research use only.



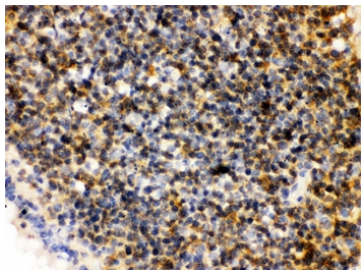
Western blot testing of human 1) HeLa and 2) PANC cell lysate with PLK1 antibody. Predicted/observed molecular weight ~68 kDa.



IHC testing of FFPE human lung cancer with PLK1 antibody. HIER: Boil the paraffin sections in pH 6, 10mM citrate buffer for 20 minutes and allow to cool prior to staining.



IHC testing of FFPE mouse lymph node with PLK1 antibody. HIER: Boil the paraffin sections in pH 6, 10mM citrate buffer for 20 minutes and allow to cool prior to staining.



IHC testing of FFPE rat lymph node with PLK1 antibody. HIER: Boil the paraffin sections in pH 6, 10mM citrate buffer for 20 minutes and allow to cool prior to staining.

Description

Serine/threonine-protein kinase PLK1, also known as polo-like kinase 1 (PLK-1) or serine/threonine-protein kinase 13 (STPK13), is an enzyme that in humans is encoded by the PLK1 (polo-like kinase 1) gene. Plk1 is an early trigger for G2/M transition. It supports the functional maturation of the centrosome in late G2/early prophase and establishment of the bipolar spindle. Also, Plk1 phosphorylates and activates cdc25C, a phosphatase that dephosphorylates and activates the cyclinB/cdc2 complex. Studies have shown that the loss of PLK1 expression can induce pro-apoptotic pathways and inhibit growth. Based on yeast and murine studies of meiosis, human PLK1 may also have a regulatory function in meiosis.

Application Notes

Optimal dilution of the PLK1 antibody should be determined by the researcher.

Immunogen

Amino acids 86-430 of human PLK1 were used as the immunogen for the PLK1 antibody.

Storage

After reconstitution, the PLK1 antibody can be stored for up to one month at 4°C. For long-term, aliquot and store at -20°C. Avoid repeated freezing and thawing.