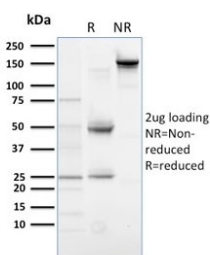


PLK1 Antibody / Polo-Like Kinase 1 [clone AZ44] (V7902)

Catalog No.	Formulation	Size
V7902-100UG	0.2 mg/ml in 1X PBS with 0.1 mg/ml BSA (US sourced) and 0.05% sodium azide	100 ug
V7902-20UG	0.2 mg/ml in 1X PBS with 0.1 mg/ml BSA (US sourced) and 0.05% sodium azide	20 ug
V7902SAF-100UG	1 mg/ml in 1X PBS; BSA free, sodium azide free	100 ug

Bulk quote request

Availability	1-3 business days
Species Reactivity	Xenopus laevis
Format	Purified
Clonality	Monoclonal (mouse origin)
Isotype	Mouse IgG1, kappa
Clone Name	AZ44
Purity	Protein G affinity chromatography
UniProt	P70032
Applications	ELISA (order BSA-free Format For Coating) : Western Blot : 1-2ug/ml
Limitations	This PLK1 antibody is available for research use only.



SDS-PAGE analysis of purified, BSA-free PLK1 antibody (clone AZ44) as confirmation of integrity and purity.

Description

Plk (for polo-like kinase) encodes a serine/threonine kinase that is closely related to polo and CDC5, genes that are required for passage through mitosis in *Drosophila* and *Saccharomyces*, respectively. Polo and Cdc5 both code for proteins that are involved in regulating the function of the mitotic spindle. Plk protein accumulates in the cell during the S

and G2 phases of the cell cycle; Plk protein content and catalytic activity peak at the onset of mitosis, followed by a rapid reduction after mitosis. Plk expression is detectable in mitotically active tissues such as colon and placenta, as well as in tumors of various origins. It has also been suggested that Plk may serve as a marker of cell proliferation. Required for recovery after DNA damage checkpoint and entry into mitosis. Required for kinetochore localization of BUB1B. Phosphorylates SGOL1. Required for spindle pole localization of isoform 3 of SGOL1 and plays a role in regulating its centriole cohesion function. Phosphorylates BORA, and thereby promotes the degradation of BORA. Contributes to the regulation of AURKA function. Regulates TP53 stability through phosphorylation of TOPORS. Useful for confirming that extracts have maintained CSF status and have not yet been activated into interphase.

Application Notes

Optimal dilution of the PLK1 antibody should be determined by the researcher.

Immunogen

Recombinant *Xenopus laevis* full length protein was used as the immunogen for the PLK1 antibody.

Storage

Store the PLK1 antibody at 2-8°C (with azide) or aliquot and store at -20°C or colder (without azide).