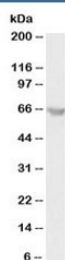


PLK Antibody (R36426)

Catalog No.	Formulation	Size
R36426-100UG	0.5 mg/ml in 1X TBS, pH7.3, with 0.5% BSA (US sourced) and 0.02% sodium azide	100 ug

[Bulk quote request](#)

Availability	1-3 business days
Species Reactivity	Human
Predicted Reactivity	Cow, Dog, Mouse, Pig, Rat
Format	Antigen affinity purified
Clonality	Polyclonal (goat origin)
Isotype	Goat Ig
Purity	Antigen affinity
Gene ID	5347
Applications	Western Blot : 1-3ug/ml ELISA (peptide) LOD : 1:128000
Limitations	This PLK antibody is available for research use only.



Western blot testing of human K562 lysate with PLK antibody at 1ug/ml. Predicted molecular weight ~68kDa.

Description

Additional name(s) for this target protein: Polo-like kinase 1; PLK1; serine/threonine-protein kinase 13; STPK13

Application Notes

Optimal dilution of the PLK antibody should be determined by the researcher.

Immunogen

Amino acids TSGYIPARLPITC from human PLK1 were used as the immunogen for this PLK antibody.

Storage

Aliquot and store the PLK antibody at -20oC.