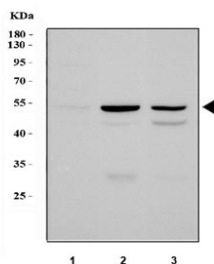


PLIN1 Antibody / Perilipin 1 (R32951)

Catalog No.	Formulation	Size
R32951	0.5mg/ml if reconstituted with 0.2ml sterile DI water	100 ug

[Bulk quote request](#)

Availability	1-3 business days
Species Reactivity	Human, Mouse, Rat
Format	Antigen affinity purified
Host	Rabbit
Clonality	Polyclonal (rabbit origin)
Isotype	Rabbit IgG
Purity	Antigen affinity
Buffer	Lyophilized from 1X PBS with 2.5% BSA, 0.025% sodium azide
UniProt	O60240
Applications	Western Blot : 0.5-1ug/ml
Limitations	This PLIN1 antibody is available for research use only.



Western blot testing of 1) human HeLa, 2) rat liver and 3) mouse liver tissue lysate with PLIN1 antibody. Expected molecular weight: 56-62 kDa.

Description

Perilipin, also known as lipid droplet-associated protein or PLIN, is a protein that, in humans, is encoded by the PLIN gene. The protein encoded by this gene coats lipid storage droplets in adipocytes, thereby protecting them until they can be broken down by hormone-sensitive lipase. The encoded protein is the major cAMP-dependent protein kinase substrate in adipocytes and, when unphosphorylated, may play a role in the inhibition of lipolysis.

Application Notes

Optimal dilution of the PLIN1 antibody should be determined by the researcher.

Immunogen

Amino acids DKVLGAALAGCELAWGVARDTAEFAANTRAGRLAS were used as the immunogen for the PLIN1 antibody.

Storage

After reconstitution, the PLIN1 antibody can be stored for up to one month at 4oC. For long-term, aliquot and store at -20oC. Avoid repeated freezing and thawing.