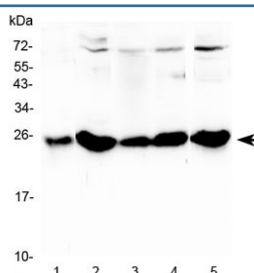


## Plgf Antibody / Pgf / Placenta growth factor (R32889)

Catalog No.	Formulation	Size
R32889	0.5mg/ml if reconstituted with 0.2ml sterile DI water	100 ug

**Bulk quote request**

<b>Availability</b>	1-3 business days
<b>Species Reactivity</b>	Mouse, Rat
<b>Format</b>	Antigen affinity purified
<b>Host</b>	Rabbit
<b>Clonality</b>	Polyclonal (rabbit origin)
<b>Isotype</b>	Rabbit IgG
<b>Purity</b>	Antigen affinity
<b>Buffer</b>	Lyophilized from 1X PBS with 2.5% BSA and 0.025% sodium azide
<b>UniProt</b>	Q63434
<b>Applications</b>	Western Blot : 0.5-1ug/ml Direct ELISA (recombinant Rat Protein) : 0.1-0.5ug/ml (BSA-free format available)
<b>Limitations</b>	This Plgf antibody is available for research use only.



Western blot testing of 1) rat stomach, 2) rat liver, 3) mouse stomach, 4) mouse liver and 5) mouse HEPA1-6 lysate with Plgf antibody at 0.5ug/ml. Predicted molecular weight: ~19 kDa (unmodified), ~28 kDa (glycosylated).

## Description

Placenta growth factor (PGF, also known as PLGF) codes for an angiogenic factor expressed in placental tissue that is similar to vascular permeability factor/vascular endothelial growth factor (VPF/VEGF). It is a glycosylated dimeric secreted protein able to stimulate endothelial cell growth in vitro. PGF is located on chromosome 14 and has been conserved in evolution. It belongs to the family of vascular endothelial growth factors (VEGFs) and binds to the flt-1 VEGF receptor. PLGF-2, which is a PLGF isoform, binds neuropilin-1 and 2 in a heparin-dependent manner. PGF regulates inter- and intra molecular cross talk between the VEGF RTKs Flt1 and Flk1 and stimulates the phosphorylation of specific Flt1

tyrosine residues and the expression of distinct downstream target genes. Moreover, it plays an important role in pathological angiogenic events and with exerting its biological activities through binding to VEGFR1.

## **Application Notes**

Optimal dilution of the Plgf antibody should be determined by the researcher.

## **Immunogen**

A recombinant rat protein corresponding to amino acids A24-L158 was used as the immunogen for the Plgf antibody.

## **Storage**

After reconstitution, the Plgf antibody can be stored for up to one month at 4oC. For long-term, aliquot and store at -20oC. Avoid repeated freezing and thawing.