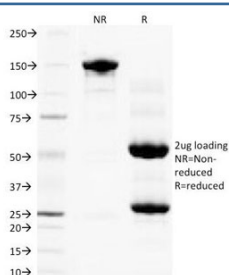


PLGF Antibody / PGF / Placenta Growth Factor [clone PLGF94] (V2223)

Catalog No.	Formulation	Size
V2223-100UG	0.2 mg/ml in 1X PBS with 0.1 mg/ml BSA (US sourced) and 0.05% sodium azide	100 ug
V2223-20UG	0.2 mg/ml in 1X PBS with 0.1 mg/ml BSA (US sourced) and 0.05% sodium azide	20 ug
V2223SAF-100UG	1 mg/ml in 1X PBS; BSA free, sodium azide free	100 ug

Bulk quote request

Availability	1-3 business days
Species Reactivity	Human
Format	Purified
Clonality	Monoclonal (mouse origin)
Isotype	Mouse IgG1, kappa
Clone Name	PLGF94
Purity	Protein G purified PLGF antibody
Buffer	1X PBS, pH 7.4
Gene ID	5228
Localization	Secreted (extracellular)
Applications	ELISA (order BSA/sodium Azide-free Format For Coating) : Functional Studies (order BSA/sodium Azide-free Format) :
Limitations	This PLGF antibody is available for research use only.



SDS-PAGE Analysis of Purified, BSA-Free PLGF Antibody (clone PLGF94).
Confirmation of Integrity and Purity of the Antibody.

Description

The onset of angiogenesis is believed to be an early event in tumorigenesis and may facilitate tumor progression and metastasis. Several growth factors with angiogenic activity have been described. These include fibroblast-, platelet derived-, vascular endothelial- and placenta- growth factor (PLGF). Like vascular endothelial growth factor, several PLGF variants have been shown to arise from alternative mRNA splicings. Evidence has suggested VEGF to be an obligatory component in PLGF signaling. While VEGF homodimers and VEGF/PLGF heterodimers function as potent mediators of mitogenic and chemotactic responses in endothelial cells, PLGF homodimers are effectual only at extremely high concentrations. Indeed, many of the physiological effects attributed to VEGF may actually be a result of VEGF/PLGF. VEGF and PLGF share a common receptor, Flt-1, and may also activate Flk-1/KDR.

Application Notes

The concentration stated for each application is a general starting point. Variations in protocols, secondaries and substrates may require the PLGF antibody to be titrated up or down for optimal performance.

Immunogen

Recombinant human protein was used as the immunogen for this PLGF antibody.

Storage

Store the PLGF antibody at 2-8oC (with azide) or aliquot and store at -20oC or colder (without azide).

References (2)