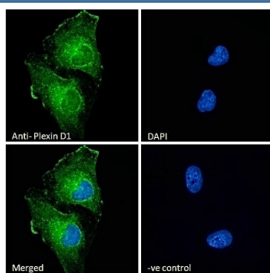


Plexin D1 Antibody / PLXND1 (R34707)

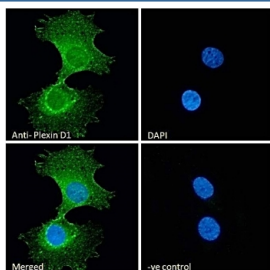
Catalog No.	Formulation	Size
R34707-100UG	0.5 mg/ml in 1X TBS, pH7.3, with 0.5% BSA (US sourced) and 0.02% sodium azide	100 ug

[Bulk quote request](#)

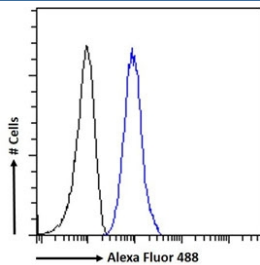
Availability	1-3 business days
Species Reactivity	Human
Format	Antigen affinity purified
Clonality	Polyclonal (goat origin)
Isotype	Goat Ig
Purity	Antigen affinity
Gene ID	23129
Applications	Flow Cytometry : 1ug/million cells in 0.1ml Immunofluorescence : 10ug/ml ELISA (peptide) LOD : 1:16000
Limitations	This Plexin D1 antibody is available for research use only.



Immunofluorescent staining of fixed and permeabilized human U-251 cells with Plexin D1 antibody (green) at 10ug/ml and DAPI nuclear stain (blue).



Immunofluorescent staining of fixed and permeabilized human HeLa cells with Plexin D1 antibody (green) at 10ug/ml and DAPI nuclear stain (blue).



FACS testing of fixed and permeabilized human K562 cells with Plexin D1 antibody (blue) at 1ug/million cells/0.1ml and naive goat Ig (black).

Description

Additional name(s) for this target protein: PLXND1; KIAA0620

Application Notes

Optimal dilution of the Plexin D1 antibody should be determined by the researcher.

Immunogen

Amino acids LAEPKKSHRQSH were used as the immunogen for this Plexin D1 antibody.

Storage

Aliquot and store the Plexin D1 antibody at -20oC.