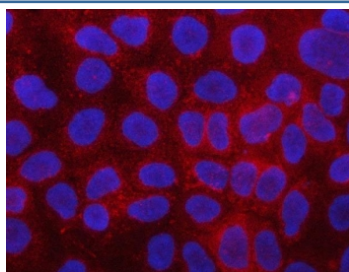


PLC-delta-3 Antibody / PLCD3 (RQ7952)

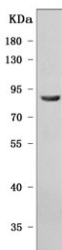
Catalog No.	Formulation	Size
RQ7952	0.5mg/ml if reconstituted with 0.2ml sterile DI water	100 ug

Bulk quote request

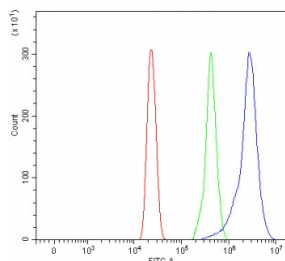
Availability	1-3 business days
Species Reactivity	Human
Format	Antigen affinity purified
Clonality	Polyclonal (rabbit origin)
Isotype	Rabbit IgG
Purity	Antigen affinity purified
Buffer	Lyophilized from 1X PBS with 2% Trehalose
UniProt	Q8N3E9
Localization	Cytoplasm
Applications	Western Blot : 0.5-1ug/ml Immunofluorescence (FFPE) : 5ug/ml Flow Cytometry : 1-3ug/million cells Direct ELISA : 0.1-0.5ug/ml
Limitations	This PLC-delta-3 antibody is available for research use only.



Immunofluorescent staining of FFPE human HL60 cells with PLC-delta-3 antibody (red) and DAPI nuclear stain (blue). HIER: steam section in pH6 citrate buffer for 20 min.



Western blot testing of human RT4 cell lysate with PLC-delta-3 antibody. Predicted molecular weight ~89 kDa.



Flow cytometry testing of human Caco-2 cells with PLC-delta-3 antibody at 1ug/million cells (blocked with goat sera); Red=cells alone, Green=isotype control, Blue= PLC-delta-3 antibody.

Description

1-Phosphatidylinositol-4,5-bisphosphate phosphodiesterase delta-3 is an enzyme that in humans is encoded by the PLCD3 gene. This gene encodes a member of the phospholipase C family, which catalyze the hydrolysis of phosphatidylinositol 4,5-bisphosphate to generate the second messengers diacylglycerol and inositol 1,4,5-trisphosphate (IP3). Diacylglycerol and IP3 mediate a variety of cellular responses to extracellular stimuli by inducing protein kinase C and increasing cytosolic Ca(2+) concentrations. This enzyme localizes to the plasma membrane and requires calcium for activation. Its activity is inhibited by spermine, sphingosine, and several phospholipids.

Application Notes

Optimal dilution of the PLC-delta-3 antibody should be determined by the researcher.

Immunogen

E. coli-derived recombinant human protein (amino acids R10-Q702) was used as the immunogen for the PLC-delta-3 antibody.

Storage

After reconstitution, the PLC-delta-3 antibody can be stored for up to one month at 4oC. For long-term, aliquot and store at -20oC. Avoid repeated freezing and thawing.