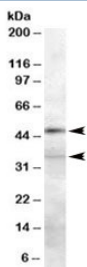


PLAU Antibody (R34181)

Catalog No.	Formulation	Size
R34181-100UG	0.5 mg/ml in 1X TBS, pH7.3, with 0.5% BSA (US sourced) and 0.02% sodium azide	100 ug

[Bulk quote request](#)

Availability	1-3 business days
Species Reactivity	Human
Format	Antigen affinity purified
Host	Goat
Clonality	Polyclonal (goat origin)
Isotype	Goat Ig
Purity	Antigen affinity
Gene ID	5328
Applications	Western Blot : 0.3-1.0ug/ml ELISA (peptide) LOD : 1:8000
Limitations	This PLAU antibody is available for research use only.



Western blot testing of 293 lysate with PLAU antibody at 0.3ug/ml. Predicted molecular weight: ~48/35kDa (full length/beta-chain). (1)

Description

Additional name(s) for this target protein: Plasminogen activator, urokinase

Application Notes

Optimal dilution of the PLAU antibody should be determined by the researcher.

1. The Cathepsin B-mediated cleavage of PLAU yields an ~35kDa beta chain (PMID: 1900515).

Immunogen

Amino acids HFLPWIRSHTKEEN were used as the immunogen for this PLAU antibody.

Storage

Aliquot and store the PLAU antibody at -20oC.

References (1)