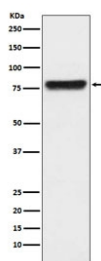


Plasma Kallikrein Antibody / KLKB1 [clone ACDB-11] (RQ5024)

Catalog No.	Formulation	Size
RQ5024	Antibody in PBS with 0.02% sodium azide, 50% glycerol and 0.4-0.5mg/ml BSA	100 ul

[Bulk quote request](#)

Availability	1-2 weeks
Species Reactivity	Human
Format	Purified
Host	Rabbit
Clonality	Rabbit Monoclonal
Isotype	Rabbit IgG
Clone Name	ACDB-11
Purity	Affinity purified
UniProt	P03952
Applications	Western Blot : 1:500-1:2000
Limitations	This Plasma Kallikrein antibody is available for research use only.



Western blot testing of human plasma lysate with Plasma Kallikrein antibody. Predicted molecular weight ~71 kDa.

Description

The enzyme cleaves Lys-Arg and Arg-Ser bonds. It activates, in a reciprocal reaction, factor XII after its binding to a negatively charged surface. It also releases bradykinin from HMW kininogen and may also play a role in the renin-angiotensin system by converting prorenin into renin. [UniProt]

Application Notes

Optimal dilution of the Plasma Kallikrein antibody should be determined by the researcher.

Immunogen

A synthetic peptide specific to human Plasma Kallikrein / KLKB1 was used as the immunogen for the Plasma Kallikrein antibody.

Storage

Store the Plasma Kallikrein antibody at -20oC.