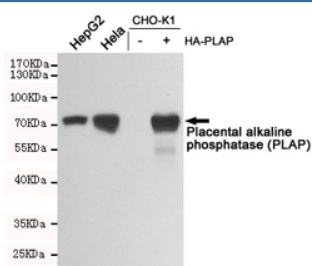


## PLAP Antibody [clone 8A11-C11-C9] (F54020)

Catalog No.	Formulation	Size
F54020-0.1ML	In PBS with 50% glycerol and 0.03% ProClin 300	0.1 ml

[Bulk quote request](#)

<b>Availability</b>	1-3 business days
<b>Species Reactivity</b>	Human
<b>Format</b>	Purified
<b>Host</b>	Mouse
<b>Clonality</b>	Monoclonal (mouse origin)
<b>Isotype</b>	Mouse IgG1
<b>Clone Name</b>	8A11-C11-C9
<b>Purity</b>	Protein G affinity
<b>UniProt</b>	P05187
<b>Applications</b>	Western Blot : 1:1000
<b>Limitations</b>	This PLAP antibody is available for research use only.



Western blot testing of HepG2, HeLa, untransfected CHO-K1 and PLAP-transfected CHO-K1 lysates using PLAP antibody at 1:1000. Predicted molecular weight: 60-70 kDa.

## Description

PLAP, Placental Alkaline Phosphatase, is a tissue specific, trophoblast-derived, 70kDa, glycosyl-phosphatidylinositol (GPI)-anchored, dimeric, Zn<sup>2+</sup> metallo glycoprotein that catalyzes the hydrolysis of phosphomonoesters into an inorganic phosphate and an alcohol.

## Application Notes

The stated application concentrations are suggested starting points. Titration of the PLAP antibody may be required due

to differences in protocols and secondary/substrate sensitivity.

## **Immunogen**

A human recombinant partial protein was used as the immunogen for this PLAP antibody.

## **Storage**

Store the PLAP antibody at -20oC.