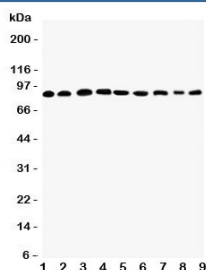


Plakophilin 2 Antibody (R31402)

Catalog No.	Formulation	Size
R31402	0.5mg/ml if reconstituted with 0.2ml sterile DI water	100 ug

[Bulk quote request](#)

Availability	1-3 business days
Species Reactivity	Human, Mouse, Rat
Format	Antigen affinity purified
Host	Rabbit
Clonality	Polyclonal (rabbit origin)
Isotype	Rabbit IgG
Purity	Antigen affinity
Buffer	Lyophilized from 1X PBS with 2.5% BSA and 0.025% sodium azide/thimerosal
UniProt	Q99959
Applications	Western Blot : 0.5-1ug/ml
Limitations	This Plakophilin 2 antibody is available for research use only.



Western blot testing of Plakophilin 2 antibody and Lane 1: rat heart; 2: human placenta; 3: (r) brain; 4: (r) intestine; 5: (h) HeLa; 6: (h) Jurkat; 7: (h) 293T; 8: (h) MCF-7; 9: (h) U87 lysate. Predicted molecular weight: 93-97 kDa.

Description

Plakophilin-2 is a protein that in humans is encoded by the PKP2 gene. This gene encodes a member of the arm-repeat (armadillo) and plakophilin gene families. PKP2 is a constituent of the desmosomal plaque in simple epithelia, some stratified epithelia, and some nonepithelial cells. It is also enriched in the karyoplasm of cells of various types, including those lacking desmosomes. PKP proteins participate in linking cadherins to intermediate filaments in the cytoskeleton and this gene product may regulate the signaling activity of beta-catenin. Plakophilin-2 has been shown to interact with Desmoplakin, Plakoglobin and Desmoglein 1.

Application Notes

The stated application concentrations are suggested starting amounts. Titration of the Plakophilin 2 antibody may be required due to differences in protocols and secondary/substrate sensitivity.

Immunogen

An amino acid sequence from the C-terminus of human PKP2 (KKTDFVNSRTAKAYHSLKD) was used as the immunogen for this Plakophilin 2 antibody (100% mouse homology).

Storage

After reconstitution, the Plakophilin 2 antibody can be stored for up to one month at 4°C. For long-term, aliquot and store at -20°C. Avoid repeated freezing and thawing.