

Plakoglobin Antibody / Gamma Catenin [clone 11E4.] (V3204)

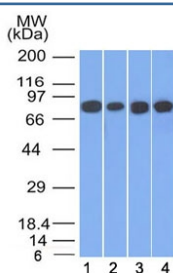
Catalog No.	Formulation	Size
V3204-100UG	0.2 mg/ml in 1X PBS with 0.1 mg/ml BSA (US sourced) and 0.05% sodium azide	100 ug
V3204-20UG	0.2 mg/ml in 1X PBS with 0.1 mg/ml BSA (US sourced) and 0.05% sodium azide	20 ug
V3204SAF-100UG	1 mg/ml in 1X PBS; BSA free, sodium azide free	100 ug



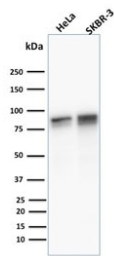
Citations (15)

[Bulk quote request](#)

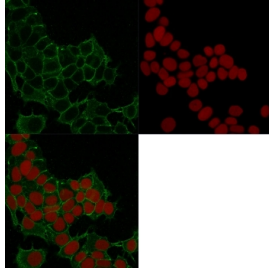
Availability	1-3 business days
Species Reactivity	Human, Mouse
Format	Purified
Clonality	Monoclonal (mouse origin)
Isotype	Mouse IgG1, kappa
Clone Name	11E4.
Purity	Protein G affinity chromatography
UniProt	P14923
Localization	Cell surface, cytoplasmic, cell junctions
Applications	Immunofluorescence : 1-2ug/ml Western Blot : 0.5-1ug/ml Flow Cytometry : 1-2ug/10 ⁶ cells
Limitations	This Plakoglobin antibody is available for research use only.



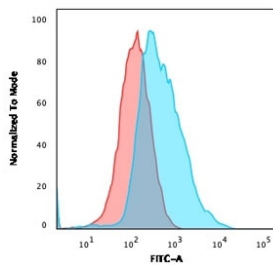
Western blot testing of human 1) HT20, 2) A549, 3) HEK293 and 4) A431 cell lysate with Plakoglobin antibody (clone 11E4). Predicted molecular weight: 80-87 kDa.



Western blot testing of human 1) HeLa and 2) SK-BR-3 cell lysate with Plakoglobin antibody (clone 11E4). Predicted molecular weight: 80-87 kDa.



Immunofluorescent staining of human HeLa cells with Plakoglobin antibody (clone 11E4, green) and Reddot nuclear stain (red).



Flow cytometry staining of PFA-fixed human MCF7 cells with Plakoglobin antibody; Red=isotype control, Blue= Plakoglobin antibody.

Description

It recognizes a protein of 80-87kDa, identified as gamma-Catenin or Plakoglobin. The catenins ($\hat{1}\pm$, $\hat{1}^2$, $\hat{1}^3$ and $\hat{1}^4$) are ubiquitously expressed, cytoplasmic proteins that associate with E-cadherin at cellular junctions. Catenin/cadherin complexes play an important role in mediating cellular adhesion. $\hat{1}\pm$ T-catenin, also referred to as VR22, is a 895-amino acid protein that is most abundantly expressed in cardio-myocytes and in the peritubular myoid cells of the testis. $\hat{1}\pm$ T-catenin binds to $\hat{1}\pm$ E-catenin as well as to $\hat{1}^2$ -catenin, and it functions to inhibit Wnt signaling. CTNNA3, the gene that encodes for $\hat{1}\pm$ -T-catenin, is located on chromosome 10, and mutations in this gene show a strong correlation to late-onset Alzheimer s disease (LOAD) as well as to dilated cardiomyopathy.

Application Notes

Titration of the Plakoglobin antibody may be required due to differences in protocols and secondary/substrate sensitivity.

Immunogen

Recombinant full length human gamma Catenin fused to maltose binding protein was used as the immunogen for the Plakoglobin antibody. The epitope has been found to be in the N-terminal region.

Storage

Store the Plakoglobin antibody at 2-8oC (with azide) or aliquot and store at -20oC or colder (without azide).

References (1)

