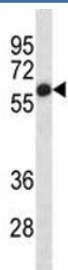


Placental Alkaline Phosphatase Antibody (F44307)

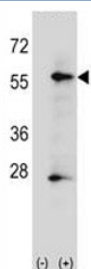
Catalog No.	Formulation	Size
F44307-0.4ML	In 1X PBS, pH 7.4, with 0.09% sodium azide	0.4 ml
F44307-0.08ML	In 1X PBS, pH 7.4, with 0.09% sodium azide	0.08 ml

[Bulk quote request](#)

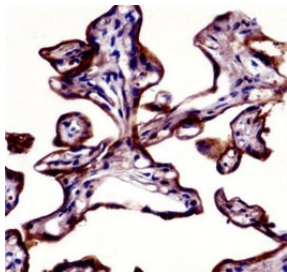
Availability	1-3 business days
Species Reactivity	Human
Format	Antigen affinity purified
Clonality	Polyclonal (rabbit origin)
Isotype	Rabbit Ig
Purity	Antigen affinity
UniProt	P05187
Applications	Western Blot : 1:1000 IHC (Paraffin) : 1:10-1:50
Limitations	This placental Alkaline Phosphatase antibody is available for research use only.



Placental Alkaline Phosphatase antibody western blot analysis in HepG2 lysate



Western blot analysis of placental Alkaline Phosphatase antibody and 293 cell lysate (2 ug/lane) either nontransfected (Lane 1) or transiently transfected (2) with the ALPP gene.



Placental Alkaline Phosphatase antibody immunohistochemistry analysis in formalin fixed and paraffin embedded human placenta tissue.

Description

There are at least four distinct but related alkaline phosphatases: intestinal, placental, placental-like, and liver/bone/kidney (tissue non-specific). The first three are located together on chromosome 2 while the tissue non-specific form is located on chromosome 1. The product of this gene is a membrane bound glycosylated enzyme, also referred to as the heat stable form, that is expressed primarily in the placenta although it is closely related to the intestinal form of the enzyme as well as to the placental-like form. The coding sequence for this form of alkaline phosphatase is unique in that the 3' untranslated region contains multiple copies of an Alu family repeat. In addition, this gene is polymorphic and three common alleles (type 1, type 2 and type 3) for this form of alkaline phosphatase have been well characterized.

Application Notes

Titration of the placental Alkaline Phosphatase antibody may be required due to differences in protocols and secondary/substrate sensitivity.

Immunogen

A portion of amino acids 56-83 from the human protein was used as the immunogen for this placental Alkaline Phosphatase antibody.

Storage

Aliquot the placental Alkaline Phosphatase antibody and store frozen at -20°C or colder. Avoid repeated freeze-thaw cycles.