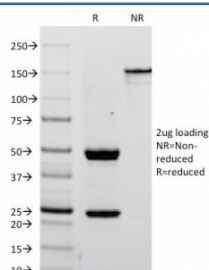


## Placental Alkaline Phosphatase Antibody [clone ALPP/238] (V2516)

Catalog No.	Formulation	Size
V2516-100UG	0.2 mg/ml in 1X PBS with 0.1 mg/ml BSA (US sourced) and 0.05% sodium azide	100 ug
V2516-20UG	0.2 mg/ml in 1X PBS with 0.1 mg/ml BSA (US sourced) and 0.05% sodium azide	20 ug
V2516SAF-100UG	1 mg/ml in 1X PBS; BSA free, sodium azide free	100 ug

[Bulk quote request](#)

<b>Availability</b>	Discontinued
<b>Species Reactivity</b>	Human
<b>Format</b>	Purified
<b>Clonality</b>	Monoclonal (mouse origin)
<b>Isotype</b>	Mouse IgG2a, kappa
<b>Clone Name</b>	ALPP/238
<b>Purity</b>	Protein G affinity chromatography
<b>UniProt</b>	P05187
<b>Localization</b>	Cytoplasmic and cell surface
<b>Applications</b>	ELISA (order BSA/sodium Azide-free Format For Coating) :
<b>Limitations</b>	This Placental Alkaline Phosphatase antibody is available for research use only.



SDS-PAGE Analysis of Purified, BSA-Free Placental Alkaline Phosphatase Antibody (clone ALPP/238). Confirmation of Integrity and Purity of the Antibody.

### Description

PLAP is a tissue specific, trophoblast-derived, 70kDa, glycosyl-phosphatidylinositol (GPI)-anchored, dimeric, Zn<sup>2+</sup> metallo glycoprotein that catalyzes the hydrolysis of phosphomonoesters into an inorganic phosphate and an alcohol. It is

present in the placenta and serum of pregnant women and in high frequency in gynecological and testicular cancers and in lower frequency in other tumors. The three tissue-specific AP's in humans, PLAP, germ cell AP (GCAP) and intestinal AP, are 90-98% homologous. Non-tissue specific AP is found in kidney, liver and bone. This mAb binds equally well to all common allelic variants (S, F, FS and I) of PLAP as to AP from normal human testis. This mAb can be used both as coating as well as tracer antibody in the same ELISA to detect PLAP in serum of S, F, FS and I phenotypes.

## Application Notes

Optimal dilution of the Placental Alkaline Phosphatase antibody should be determined by the researcher.

## Immunogen

Recombinant full-length human ALPP protein was used as the immunogen for the Placental Alkaline Phosphatase antibody.

## Storage

Store the Placental Alkaline Phosphatase antibody at 2-8oC (with azide) or aliquot and store at -20oC or colder (without azide).