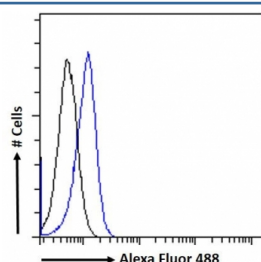


## PLA2R1 Antibody (R33831)

Catalog No.	Formulation	Size
R33831-100UG	0.5 mg/ml in 1X TBS, pH7.3, with 0.5% BSA (US sourced) and 0.02% sodium azide	100 ug

[Bulk quote request](#)

Availability	1-3 business days
Species Reactivity	Human
Format	Antigen affinity purified
Host	Goat
Clonality	Polyclonal (goat origin)
Isotype	Goat Ig
Purity	Antigen affinity
Gene ID	22925
Applications	Flow Cytometry : 10ug/ml ELISA (peptide) LOD : 1:1000
Limitations	This PLA2R1 antibody is available for research use only.



FACS testing of fixed and permeabilized human HEK293 cells with PLA2R1 antibody (blue) at 10ug/ml and naive goat Ig (black).

## Description

Additional name(s) for this target protein: Phospholipase A2 receptor 1

## Application Notes

Optimal dilution of the PLA2R1 antibody should be determined by the researcher.

## Immunogen

Amino acids EKKKDTPKQHGT were used as the immunogen for this PLA2R1 antibody.

## **Storage**

Aliquot and store the PLA2R1 antibody at -20oC.