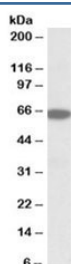


## PLA2G4C Antibody (R34930)

Catalog No.	Formulation	Size
R34930-100UG	0.5 mg/ml in 1X TBS, pH7.3, with 0.5% BSA (US sourced) and 0.02% sodium azide	100 ug

[Bulk quote request](#)

Availability	1-3 business days
Species Reactivity	Human
Format	Antigen affinity purified
Clonality	Polyclonal (goat origin)
Isotype	Goat Ig
Purity	Antigen affinity
Gene ID	8605
Applications	Western Blot : 0.03-0.1ug/ml ELISA (peptide) LOD : 1:128000
Limitations	This PLA2G4C antibody is available for research use only.



Western blot testing of human pancreas lysate with PLA2G4C antibody at 0.03ug/ml.  
Predicted molecular weight: ~63kDa.

### Description

Additional name(s) for this target protein: Phospholipase A2 group IVC

### Application Notes

Optimal dilution of the PLA2G4C antibody should be determined by the researcher.

### Immunogen

Amino acids NTEVIREYIFDQLR were used as the immunogen for this PLA2G4C antibody.

## Storage

Aliquot and store the PLA2G4C antibody at -20oC.