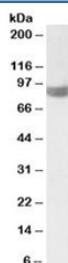


PLA2G4A Antibody (R35244)

Catalog No.	Formulation	Size
R35244-100UG	0.5 mg/ml in 1X TBS, pH7.3, with 0.5% BSA (US sourced) and 0.02% sodium azide	100 ug

[Bulk quote request](#)

Availability	1-3 business days
Species Reactivity	Human, Mouse
Predicted Reactivity	Rat
Format	Antigen affinity purified
Host	Goat
Clonality	Polyclonal (goat origin)
Isotype	Goat Ig
Purity	Antigen affinity
Gene ID	5321
Applications	Western Blot : 1-3ug/ml ELISA (peptide) LOD : 1:32000
Limitations	This PLA2G4A antibody is available for research use only.



Western blot testing of HeLa lysate with PLA2G4A antibody at 1ug/ml. Predicted molecular weight: ~85kDa.

Description

Additional name(s) for this target protein: Phospholipase A2, group IVA, cytosolic PLA2

Application Notes

Optimal dilution of the PLA2G4A antibody should be determined by the researcher.

Immunogen

Amino acids QEKTRQQRKEHIR were used as the immunogen for this PLA2G4A antibody.

Storage

Aliquot and store the PLA2G4A antibody at -20oC.