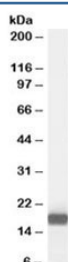


PLA2G1B Antibody (R34830)

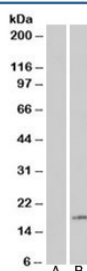
Catalog No.	Formulation	Size
R34830-100UG	0.5 mg/ml in 1X TBS, pH7.3, with 0.5% BSA (US sourced) and 0.02% sodium azide	100 ug

[Bulk quote request](#)

Availability	1-3 business days
Species Reactivity	Human
Predicted Reactivity	Dog
Format	Antigen affinity purified
Clonality	Polyclonal (goat origin)
Isotype	Goat Ig
Purity	Antigen affinity
Gene ID	5319
Applications	Western Blot : 0.01-0.1ug/ml ELISA (peptide) LOD : 1:64000
Limitations	This PLA2G1B antibody is available for research use only.



Western blot testing of human pancreas lysate with PLA2G1B antibody at 0.01ug/ml.
Predicted molecular weight: ~16kDa.



Western blot of HEK293 lysate overexpressing PLA2G1B probed with PLA2G1B antibody (mock transfection in lane 1). Predicted molecular weight: ~16kDa.

Description

Additional name(s) for this target protein: Phospholipase A2, group IB (pancreas), PLA2, PLA2A, PPLA2

Application Notes

Optimal dilution of the PLA2G1B antibody should be determined by the researcher.

Immunogen

Amino acids NKAHKNLDTKKYCQS were used as the immunogen for this PLA2G1B antibody.

Storage

Aliquot and store the PLA2G1B antibody at -20oC.