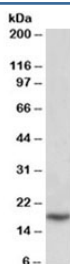


## PLA2 Antibody / PLA2G2A (R36113)

Catalog No.	Formulation	Size
R36113-100UG	0.5 mg/ml in 1X TBS, pH7.3, with 0.5% BSA (US sourced) and 0.02% sodium azide	100 ug

[Bulk quote request](#)

Availability	1-3 business days
Species Reactivity	Human
Format	Antigen affinity purified
Clonality	Polyclonal (goat origin)
Isotype	Goat Ig
Purity	Antigen affinity
Gene ID	5320
Applications	Western Blot : 0.1-0.3ug/ml ELISA (peptide) LOD : 1:8000
Limitations	This PLA2 antibody is available for research use only.



Western blot testing of placenta lysate with PLA2 antibody at 0.1ug/ml. Predicted molecular weight ~16kDa.

### Description

Additional name(s) for this target protein: secretory Phospholipase A2; phospholipase A2, group IIA (PLA2G2A)

### Application Notes

Optimal dilution of the PLA2 antibody should be determined by the researcher.

### Immunogen

Amino acids SYKFSNSGSRIT were used as the immunogen for this PLA2 antibody.

## Storage

Aliquot and store the PLA2 antibody at -20oC.