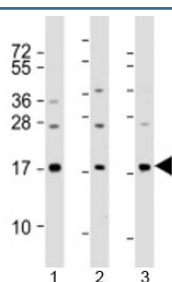


## PLA2 Antibody / PLA2G2A / Phospholipase A2 (F53891)

Catalog No.	Formulation	Size
F53891-0.2ML	In 1X PBS, pH 7.4, with 0.09% sodium azide	0.2 ml
F53891-0.05ML	In 1X PBS, pH 7.4, with 0.09% sodium azide	0.05 ml

**Bulk quote request**

<b>Availability</b>	1-3 business days
<b>Species Reactivity</b>	Human
<b>Format</b>	Antigen affinity purified
<b>Clonality</b>	Polyclonal (rabbit origin)
<b>Isotype</b>	Rabbit Ig
<b>Purity</b>	Antigen affinity
<b>UniProt</b>	P14555
<b>Applications</b>	Western Blot : 1:1000-2000
<b>Limitations</b>	This PLA2 antibody is available for research use only.



Western blot testing of human 1) A549, 2) HeLa and 3) spleen lysate with PLA2 antibody at 1:2000. Predicted molecular weight: 16 kDa.

### Description

Secretory PLA2G2A is thought to participate in the regulation of the phospholipid metabolism in biomembranes including eicosanoid biosynthesis. Catalyzes the calcium-dependent hydrolysis of the 2- acyl groups in 3-sn-phosphoglycerides.

### Application Notes

Titration of the PLA2 antibody may be required due to differences in protocols and secondary/substrate sensitivity.

### Immunogen

A portion of amino acids 106-135 from human PLA2G2A were used as the immunogen for the PLA2 antibody.

## Storage

Aliquot the PLA2 antibody and store frozen at -20oC or colder. Avoid repeated freeze-thaw cycles.