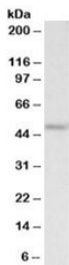


PLA1 Antibody (R33913)

Catalog No.	Formulation	Size
R33913-100UG	0.5 mg/ml in 1X TBS, pH7.3, with 0.5% BSA (US sourced) and 0.02% sodium azide	100 ug

[Bulk quote request](#)

Availability	1-3 business days
Species Reactivity	Human
Predicted Reactivity	Cow, Dog, Rat
Format	Antigen affinity purified
Host	Goat
Clonality	Polyclonal (goat origin)
Isotype	Goat Ig
Purity	Antigen affinity
Gene ID	25833
Applications	Western Blot : 1-3ug/ml ELISA (peptide) LOD : 1:32000
Limitations	This PLA1 antibody is available for research use only.



Western blot testing of HEK293 lysate with PLA1 antibody at 2ug/ml. Predicted molecular weight: ~47kDa.

Description

Additional name(s) for this target protein: Phospholipase A1; POU2F3; POU class 2 homeobox 3

Application Notes

Optimal dilution of the PLA1 antibody should be determined by the researcher.

Immunogen

Amino acids EPHLEASQHLPVKH were used as the immunogen for this PLA1 antibody.

Storage

Aliquot and store the PLA1 antibody at -20oC.