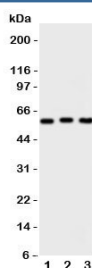


PKM2 Antibody (R31156)

Catalog No.	Formulation	Size
R31156	0.5mg/ml if reconstituted with 0.2ml sterile DI water	100 ug

Bulk quote request

Availability	1-3 business days
Species Reactivity	Human, Mouse, Rat
Format	Antigen affinity purified
Clonality	Polyclonal (rabbit origin)
Isotype	Rabbit IgG
Purity	Antigen affinity
Buffer	Lyophilized from 1X PBS with 2.5% BSA and 0.025% sodium azide/thimerosal
UniProt	P14618
Applications	Western Blot : 0.5-1ug/ml
Limitations	This PKM2 antibody is available for research use only.



Western blot testing of PKM2 antibody and Lane 1: HeLa; 2: MCF-7; 3: A549 cell lysate. Predicted molecular weight ~58 KDa.

Description

Pyruvate Kinase, Muscle, also known as PK3 or PKM2, is an enzyme that in humans is encoded by the PKM gene. The activity of pyruvate kinase subtype M2 is increased by fructose 1, 6-bisphosphate(Fru-1, 6-P2). By in situ hybridization, Popescu and Cheng (1990) mapped the gene to 15q24-q25. Ashizawa et al.(1991) manipulated the intracellular Fru-1, 6-P2 concentration in several mammalian cell lines, including human, by varying the glucose concentration in the media. Using a novel proteomic screen for phosphotyrosine-binding proteins, Christofk et al.(2008) observed that PKM2 binds directly and selectively to tyrosine-phosphorylated peptides.

Application Notes

The stated application concentrations are suggested starting amounts. Titration of the PKM2 antibody may be required due to differences in protocols and secondary/substrate sensitivity.

Immunogen

An amino acid sequence from the N-terminus of human PKM2 (SHGTHEYHAETIKNV) was used as the immunogen for this PKM2 antibody (100% homologous in human, mouse and rat).

Storage

After reconstitution, the PKM2 antibody can be stored for up to one month at 4oC. For long-term, aliquot and store at -20oC. Avoid repeated freezing and thawing.