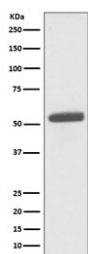


PKM2 Antibody / Pyruvate Kinase [clone GCB-16] (RQ5429)

Catalog No.	Formulation	Size
RQ5429	Antibody in PBS with 0.02% sodium azide, 50% glycerol and 0.4-0.5mg/ml BSA	100 ul

[Bulk quote request](#)

Availability	1-2 weeks
Species Reactivity	Human
Format	Purified
Host	Rabbit
Clonality	Rabbit Monoclonal
Isotype	Rabbit IgG
Clone Name	GCB-16
Purity	Affinity purified
UniProt	P14618
Applications	Western Blot : 1:1000-1:2000
Limitations	This PKM2 antibody is available for research use only.



Western blot testing of human HeLa cell lysate with PKM2 antibody. Predicted molecular weight ~58 kDa.

Description

The PKM gene encodes a protein involved in glycolysis. The encoded protein is a pyruvate kinase that catalyzes the transfer of a phosphoryl group from phosphoenolpyruvate to ADP, generating ATP and pyruvate. This protein has been shown to interact with thyroid hormone and may mediate cellular metabolic effects induced by thyroid hormones. This protein has been found to bind Opa protein, a bacterial outer membrane protein involved in gonococcal adherence to and invasion of human cells, suggesting a role of this protein in bacterial pathogenesis. Several alternatively spliced transcript variants encoding a few distinct isoforms have been reported. [RefSeq]

Application Notes

Optimal dilution of the PKM2 antibody should be determined by the researcher.

Immunogen

A synthetic peptide specific to human PKM2 was used as the immunogen for the PKM2 antibody.

Storage

Store the PKM2 antibody at -20oC.