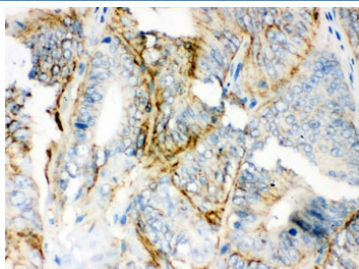


PKLR Antibody / Pyruvate kinase isozymes L/R (R32061)

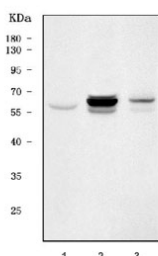
Catalog No.	Formulation	Size
R32061	0.5mg/ml if reconstituted with 0.2ml sterile DI water	100 ug

Bulk quote request

Availability	1-3 business days
Species Reactivity	Human, Mouse, Rat
Format	Antigen affinity purified
Host	Rabbit
Clonality	Polyclonal (rabbit origin)
Isotype	Rabbit IgG
Purity	Antigen affinity
Buffer	Lyophilized from 1X PBS with 2.5% BSA and 0.025% sodium azide
UniProt	P30613
Localization	Cytoplasmic
Applications	Western Blot : 0.1-0.5ug/ml Immunohistochemistry (FFPE) : 0.5-1ug/ml
Limitations	This PKLR antibody is available for research use only.



IHC testing of FFPE human intestinal cancer with PKLR antibody. HIER: Boil the paraffin sections in pH 6, 10mM citrate buffer for 20 minutes and allow to cool prior to staining.



Western blot testing of 1) human HepG2, 2) rat liver and 3) mouse liver tissue lysate with PKLR antibody. Predicted molecular weight ~62 kDa.

Description

Pyruvate kinase isozymes L/R is an enzyme that in humans is encoded by the PKLR gene. It is mapped to 1q21. The protein encoded by this gene is a pyruvate kinase that catalyzes the transphosphorylation of phosphoenolpyruvate into pyruvate and ATP, which is the rate-limiting step of glycolysis. Defects in this enzyme, due to gene mutations or genetic variations, are the common cause of chronic hereditary nonspherocytic hemolytic anemia (CNSHA or HNSHA). Multiple transcript variants encoding different isoforms have been found for this gene.

Application Notes

Optimal dilution of the PKLR antibody should be determined by the researcher.

Immunogen

Amino acids EAIWADDVDRRVQFGIESGKLRGFLRVGDLV of human PKLR were used as the immunogen for the PKLR antibody.

Storage

After reconstitution, the PKLR antibody can be stored for up to one month at 4°C. For long-term, aliquot and store at -20°C. Avoid repeated freezing and thawing.